

Stella, Hill Lane, Bransgore, Christchurch,  
Dorset, BH23 8BL

Asking Price **£825,000**



4

Bedrooms



2

Living



3

Bathroom/Ensuite



6+/  
1

Parking/Garage



EST  
1992

THE PROPERTY PROFESSIONALS  
Slades Estate Agents

Slades

# BEAUTIFUL VILLAGE LOCATION

---

A MOST IMPRESSIVE, MODERN, FOUR DOUBLE BEDROOM CHALET STYLE RESIEDNCE UPON AN ATTRACTIVE CORNER PLOT WITH A LARGE GATED DRIVEWAY, DOUBLE GARAGE & SECLUDED REAR GARDEN, SITUATED ON A QUIET LANE IN A HIGLY REGARDED VILLAGE LOCATION

This stunning modern home which was built approximately 15 years ago offers spacious and immaculately presented accommodation to include a large Living Room, an impressive Kitchen and Utility Room, a Dining Room, a ground floor Bedroom and Shower Room, three first floor Bedrooms, an Office, a principal Bathroom and an En Suite Shower Room. The property occupies a substantial corner plot benefiting from a large gated Driveway, a double Garage and a secluded rear Garden.

Situated on a charming lane which many regard as one of the most favoured residential locations within this lovely Village, the property enjoys a quiet location but is only a short walk from the village centre which offers a good range of day to day shopping facilities, three charming public houses, a Medical Centre, and a popular Primary School which is in turn a feeder for the highly regarded Ringwood and Highcliffe comprehensives. The beautiful harbourside Town of Christchurch and the charming Market Town of Ringwood which both offer a more comprehensive range of shopping and entertainment facilities are approximately 5 and 6 miles distant respectively.

## INTERNALLY:

Accessed via a particularly spacious Entrance Hall, the ground floor offers a large dual aspect Living Room, a stunning modern Kitchen with gloss fronted units and wooden worktops which opens to a dual aspect Dining Room with doors opening to the rear Garden, a Utility Room, a double Bedroom and a modern Shower Room.

To the first floor, a spacious Master Bedroom which enjoys a dual aspect benefits from fitted wardrobes and an En Suite Shower Room, Bedroom Two is an attractive good sized L-shaped Room whilst Bedroom Three is an ample double. There is also a separate Office and a modern principal Bathroom fitted with a four piece suite.

## EXTERNALLY:

To the front is a vast gated gravel Driveway and an area of lawn bounded by post and rail style fencing. To the side is a substantial timber framed Double Garage fitted with power and lighting.

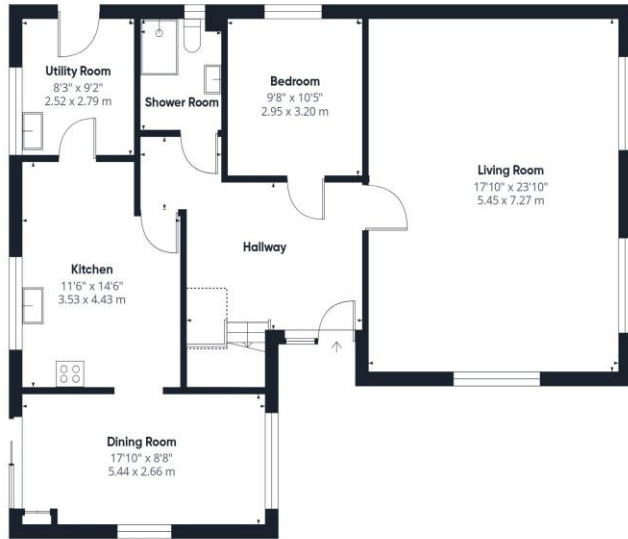
The rear Garden which enjoys a good degree of privacy is laid to lawn with two patio areas, to one end is a Garden Shed and a selection of apple trees.

COUNCIL TAX BAND: E  
TENURE: FREEHOLD

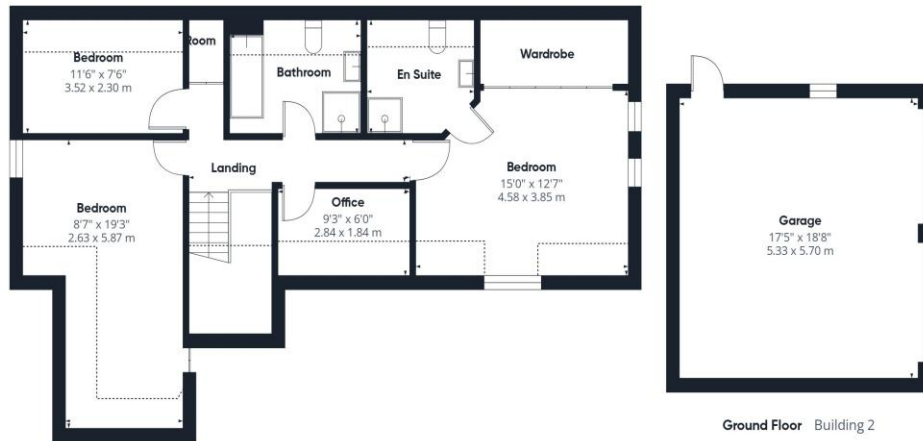


## KEY POINTS

- Impressive modern home
- Immaculately & tastefully presented
- Four double Bedrooms + Study
- Three Bath/Shower Rooms
- Two Reception Rooms
- Delightful village location



Ground Floor Building 1



Ground Floor Building 2

Floor 1 Building 1

**Approximate total area<sup>m</sup>**

2257 ft<sup>2</sup>  
209.6 m<sup>2</sup>

**Reduced headroom**

168 ft<sup>2</sup>  
15.6 m<sup>2</sup>

(1) Excluding balconies and terraces

Reduced headroom

..... Below 5 ft/1.5 m

Calculations reference the RICS IPMS 3C standard. Measurements are approximate and not to scale. This floor plan is intended for illustration only.

GIRAFFE360



# THE PROPERTY PROFESSIONALS Christchurch | Southbourne | Highcliffe | Bransgore



**Slades - Bransgore** The Corner House, Ringwood Road, Bransgore, Christchurch, BH23 8AA  
01425 673311 | [sales@sladesbransgore.co.uk](mailto:sales@sladesbransgore.co.uk)  
Website [www.sladeshomes.co.uk](http://www.sladeshomes.co.uk)

