

3, Seacote, 6 Warren Edge Road,  
Southbourne, BH6 4AU

Asking Price **£595,000**



3

Bedrooms



1

Living



2

Bathroom/Ensuite



Y

Parking



EST  
1992

THE PROPERTY PROFESSIONALS  
Slades Estate Agents

Slades

# A stunning townhouse offering wonderful views!

Seacote is a luxury collection of modern apartments and town houses set just a few hundred yards from sandy beaches, stretching from Mudeford spit to the East to Sandbanks peninsular in the West.

The subject property is one of only three freehold houses within the development, set over three floors and offers three double bedrooms, two bathrooms, a kitchen/breakfast room and both a courtyard garden and balcony which offers views stretching from Christchurch Priory to the Isle of Wight.

The ground floor offers a ground floor double bedroom, benefiting from an En-Suite WC and built in wardrobes. Sliding patio doors with matching casement windows either side lead to the southerly facing sun terrace, a great space to enjoy breakfast in the summer.

The first-floor benefits from a modernised kitchen/Breakfast room with built in appliances and a large double bedroom which is set to the rear of the house.

The Kitchen/Breakfast room has been fitted during our clients 5 years of ownership and offers a range of eye level and base units set above and below the work surfaces. There are built in appliances and space for a large dining table.

Stairs lead from the spacious first floor landing to the second-floor accommodation where a further double bedroom with an En-suite and living room can be found.

The bedroom is a gorgeous room, with vaulted ceilings, and a picture window to the rear. There is an En-Suite shower room and ample space for a double bed and other bedroom furniture.

The living room is another superb room, with feature semi-vaulted ceilings and floor to ceiling patio doors/windows leading onto the southerly facing balcony which offer the most wonderful views towards Christchurch priory, Hengistbury Head, Isle of Wight and the Needles.

Externally, there is an under-croft parking space conveyed with the property and visitor spaces within the development.

A super permanent or second home, an internal inspection comes highly recommended.

Please note: Some of the photos depicted within our details have been AI enhanced

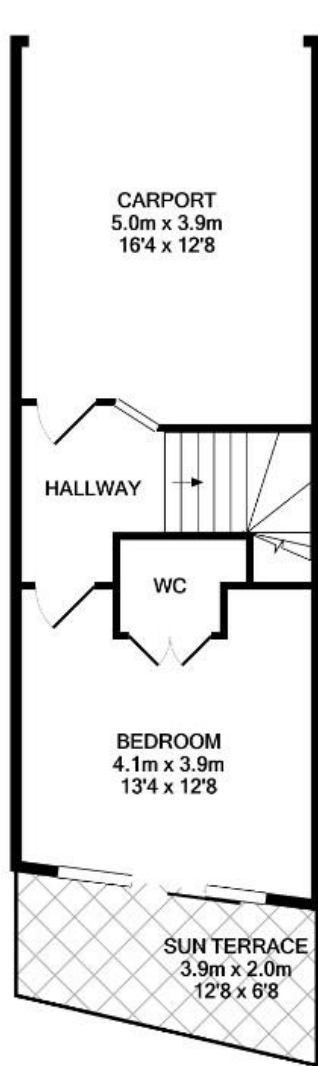


## KEY POINTS

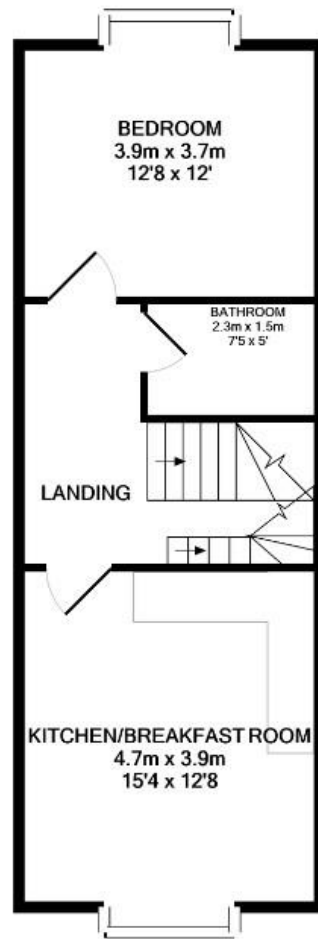
Stunning three storey townhouse

Just a few hundred yards to clifftops

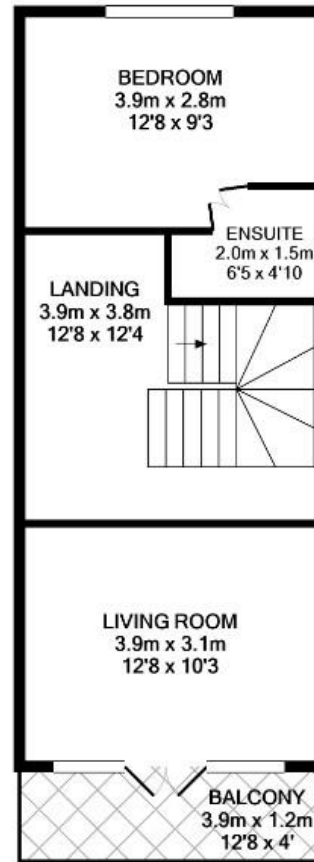
Wonderful sea and coastal views



GROUND FLOOR  
APPROX. FLOOR  
AREA 42.0 SQ.M.  
(452 SQ.FT.)



1ST FLOOR  
APPROX. FLOOR  
AREA 44.1 SQ.M.  
(474 SQ.FT.)



2ND FLOOR  
APPROX. FLOOR  
AREA 37.5 SQ.M.  
(404 SQ.FT.)

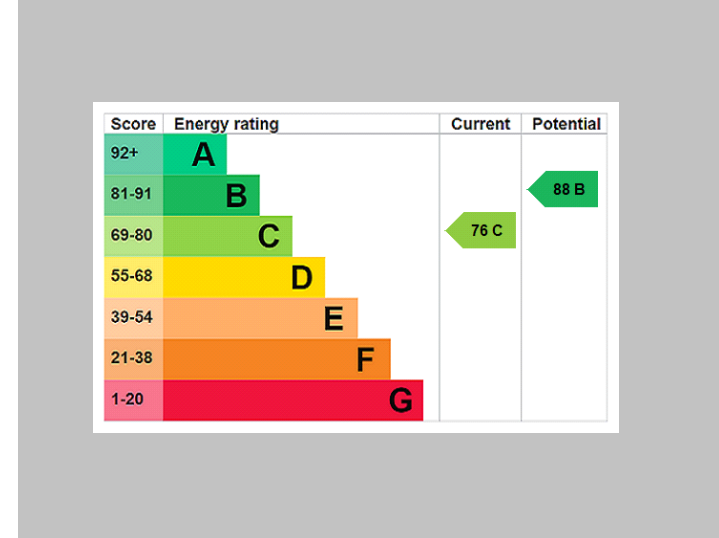
TOTAL APPROX. FLOOR AREA 123.6 SQ.M. (1330 SQ.FT.)

Whilst every attempt has been made to ensure the accuracy of the floor plan contained here, measurements of doors, windows, rooms and any other items are approximate and no responsibility is taken for any error, omission, or mis-statement. This plan is for illustrative purposes only and should be used as such by any prospective purchaser. The services, systems and appliances shown have not been tested and no guarantee as to their operability or efficiency can be given  
Made with Metropix ©2020



**The Consumer Protection from Unfair Trading Regulations 2008 (CPRs).** These details are for guidance only and complete accuracy cannot be guaranteed. If there is any point, which is of particular importance, verification should be obtained. They do not constitute a contract or part of a contract. All measurements are approximate. No guarantee can be given with regard to planning permissions or fitness for purpose. No apparatus, equipment, fixture or fitting has been tested. Items shown in photographs are NOT necessarily included. Interested Parties are advised to check availability and make an appointment to view before travelling to see a property.

# THE PROPERTY PROFESSIONALS | Christchurch | Southbourne | Highcliffe | Bransgore



**Slades - Southbourne** 51 Southbourne Grove, Bournemouth, Dorset, BH6 3QT  
01202 428555 | [sales@sladessouthbourne.co.uk](mailto:sales@sladessouthbourne.co.uk)  
Website [www.sladeshomes.co.uk](http://www.sladeshomes.co.uk)

