

12 Donnington Drive, Christchurch, Dorset,
BH23 4SZ

Guide Price **£600,000**



5

Bedrooms



3

Living



2

Bathrooms



Parking & Garage



EST
1992

THE PROPERTY PROFESSIONALS
Slades Estate Agents

Slades

A Spacious Five Bedroom Detached House in Mundeford

THIS GENEROUS FIVE BEDROOM DETACHED HOUSE IS SITUATED JUST A SHORT DISTANCE FROM MUDEFORD QUAY AND AVON BEACH. THE PROPERTY BENEFITS FROM AMPLE OFF ROAD PARKING AND A GARAGE.

12 Donnington Drive is an opportunity to purchase an impressive detached house in a sought after location. The property is situated within a short distance of the picturesque Mundeford Quay and the sandy Avon Beach. Christchurch Town Centre with its 11th Century Priory, Town Quay and various shops, cafes, bars and restaurants is just over two miles away. Bus services connect the surrounding area.

The front door leads into the porch and in turn the entrance hall. The lounge is set to the front of the property with double doors through to the dining room. There is a conservatory extension to the rear of the property. There is an L-Shaped kitchen/breakfast room which has a range of base and eye level units with an integral cooker and hob. There is a separate utility room with some further units and space/plumbing for a washing machine. An inner hall gives access to a ground floor double bedroom and a shower room with wc, basin and shower units.

Stairs from the entrance hall lead to the first floor landing. There are four bedrooms on the first floor. Bedroom one benefits from some built in wardrobes. The family bathroom features a wc, basin and bath with shower over.

To the front of the, a driveway provides OFF ROAD PARKING for multiple cars. There is an ATTACHED GARAGE with electric up and over door. There is also internal access to the garage from the inner hall.

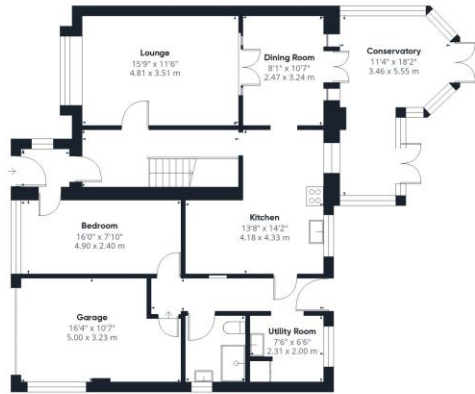
The rear garden features sections of lawn, patio and decking. There is a GARDEN CHALET at the end of the garden.

TENURE: FREEHOLD
COUNCIL TAX BAND: E



KEY POINTS

- DETACHED HOUSE
- FIVE BEDROOMS
- EXTENDED
- CLOSE TO QUAY & BEACH
- QUIET CUL DE SAC
- PARKING & GARAGE



Ground Floor Building 1



Floor 1 Building 1



Approximate total area⁽¹⁾
1615 ft²
149.8 m²

(1) Excluding balconies and terraces

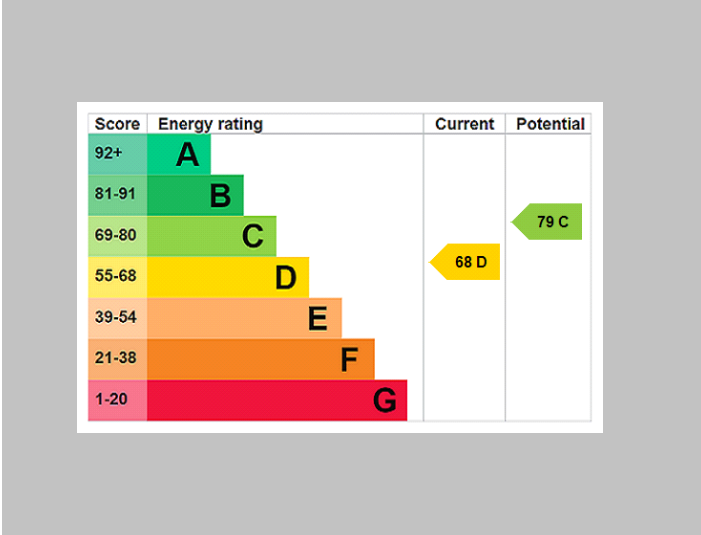
Calculations reference the RICS IPMS 3C standard. Measurements are approximate and not to scale. This floor plan is intended for illustration only.

GIRAFFE 360



The Consumer Protection from Unfair Trading Regulations 2008 (CPRs). These details are for guidance only and complete accuracy cannot be guaranteed. If there is any point, which is of particular importance, verification should be obtained. They do not constitute a contract or part of a contract. All measurements are approximate. No guarantee can be given with regard to planning permissions or fitness for purpose. No apparatus, equipment, fixture or fitting has been tested. Items shown in photographs are NOT necessarily included. Interested Parties are advised to check availability and make an appointment to view before travelling to see a property.

THE PROPERTY PROFESSIONALS Christchurch | Southbourne | Highcliffe | Bransgore



Slades - Christchurch 7 Castle Street, Christchurch, Dorset, BH23 1DP
 01202 474202 | enquiries@sladeschristchurch.co.uk
 Website www.sladeshomes.co.uk

