

21 Elmers Way, Bransgore, Christchurch,
Dorset, BH23 8HB

Asking Price **£540,000**



4

Bedrooms



2

Living



1/1

Bathroom/Ensuite



3+

Parking



EST
1992

THE PROPERTY PROFESSIONALS
Slades Estate Agents

Slades

NO FORWARD CHAIN

***NO CHAIN* A SPACIOUS, BEAUTIFULLY PRESENTED AND WELL APPOINTED FOUR BEDROOM DETACHED BUNGALOW INCORPORATING AN IMPRESSIVE MASTER BEDROOM SUITE, A TASTEFUL KITCHEN/DINING, TWO RECEPTION ROOMS AND A LARGE GARDEN CABIN, SITUATED IN A QUIET & TUCKED AWAY, YET CONVENIENT VILLAGE LOCATION.**

This attractive four Bedroom Detached Bungalow has been extended and greatly improved by the current owners as such, is presented in excellent order throughout. Spacious and immaculately presented accommodation includes a Kitchen/Dining Room, two Reception Rooms, a Master Bedroom suite and a stunning modern Bathroom. Further noteworthy features include a good size Driveway, an attractive Garden and a substantial Garden Cabin.

Bransgore is an increasingly popular village offering an excellent range of amenities to include a good variety of shops, a Doctors Surgery and a number of Public Houses, along with a most popular Primary School which is a feeder for the highly regarded Highcliffe and Ringwood Comprehensives. The New Forest National Park is close to hand, whilst the charming harbourside town of Christchurch and its neighbouring coastline is a short drive away.

INTERNALLY:

An impressive Kitchen which flows openly to a Conservatory making an idela Dining space with doors to the rear grden, offers a selection of units incorporating a Pantry cupboard and enjoys a fitted double Oven and five ring gas hob, further complemented by a breakfast bar and tiled flooring.

A spacious dual aspect Sitting Room offers twin doors to an Adjacent Dining Room with both rooms enjoying access to the rear Garden.

An impressive, spacious Master Bedroom enjoys a Dressing Room and En Suite Shower Room.

Bedroom Two and Three are ample size double size rooms whilst Bedroom Four is currently used as a Study.

The tasteful modern Family Bathroom offers a matching white 3-piece suite incorporating a both a vanity unit and a panelled bath with shower fitment over.

EXTERNALLY:

To the front and side of the property is a good size Driveway and a lawned front Garden, bounded by a hedge border.

The Rear Garden is laid predominantly to lawn with a patio and gravelled areas.

There is also a large Summerhouse/Cabin, which could further be adapted to provide a home office or alternative space.

COUNCIL TAX BAND: D
TENURE: FREEHOLD.

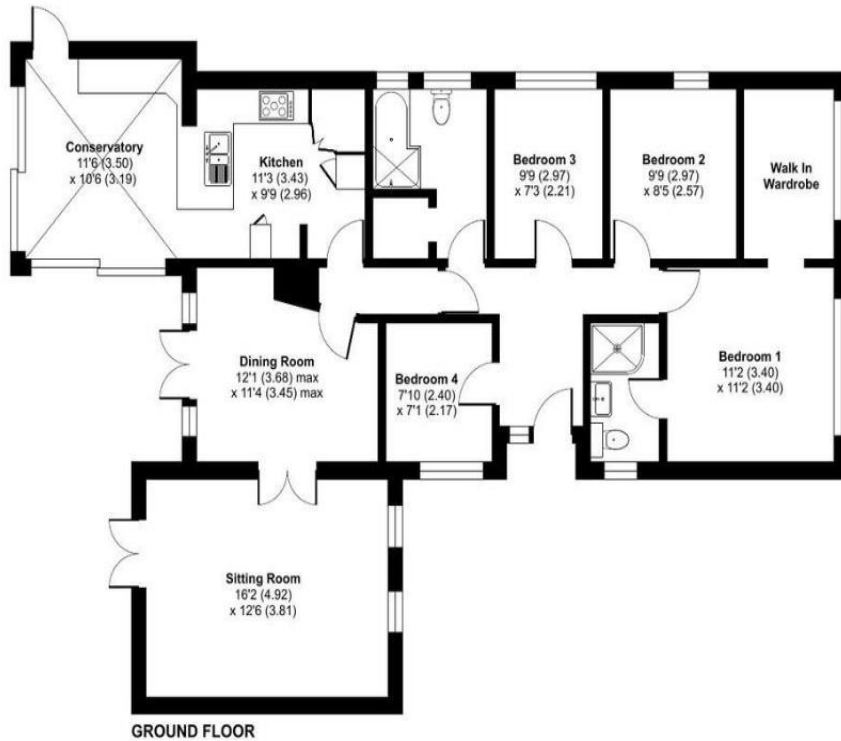


KEY POINTS

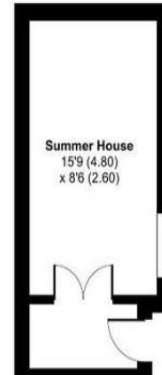
- Immaculately & tastefully presented
- Impressive Master Bedroom Suite
- Modern Kitchen/Dining Room
- Two Reception Rooms & Conservatory
- Stunning modern Bathroom
- Large Garden Cabin



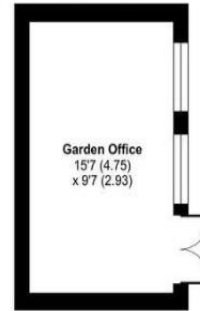
Approximate Area = 1241 sq ft / 115.2 sq m
Outbuilding = 315 sq ft / 29.2 sq m
Total = 1556 sq ft / 144.4 sq m
For identification only - Not to scale



GROUND FLOOR



OUTBUILDING 2

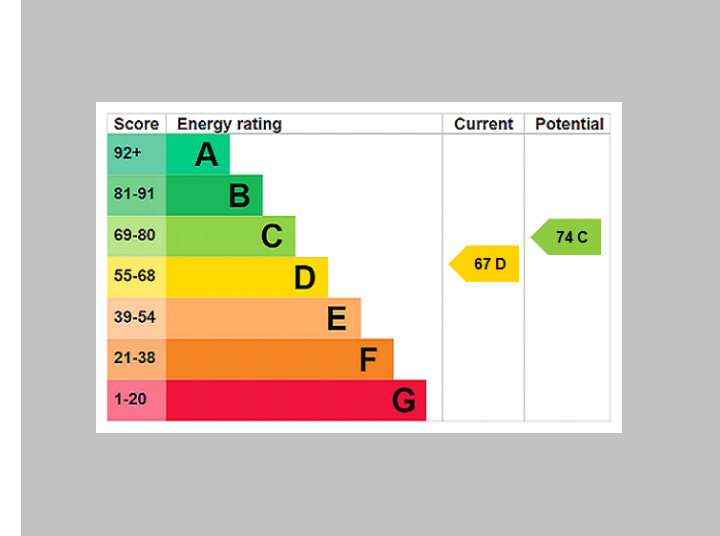


OUTBUILDING 1



 Floor plan produced in accordance with RICS Property Measurement 2nd Edition, Incorporating International Property Measurement Standards (IPMS2 Residential). © nichecom 2025. Produced for Spencers of the New Forest Ltd. REF: 1386096

THE PROPERTY PROFESSIONALS Christchurch | Southbourne | Highcliffe | Bransgore



Slades - Bransgore The Corner House, Ringwood Road, Bransgore, Christchurch, BH23 8AA
 01425 673311 | sales@sladesbransgore.co.uk
 Website www.sladeshomes.co.uk

