

10 Blackbird Way, Bransgore,
Christchurch, Dorset, BH23 8LG

Asking Price **£460,000**



2

Bedrooms



2

Living



1/1

Bathroom/Ensuite



2+/1

Parking/Garage



EST
1992

THE PROPERTY PROFESSIONALS
Slades Estate Agents

Slades

HIGHLY REGARDED VILLAGE LOCATION

A TWO DOUBLE BEDROOM DETACHED BUNGALOW IN A HIGHLY REGARDED VILLAGE LOCATION, OFFERING SCOPE FOR COSMETIC MODERNISATION AND OFFERED WITH NO FORWARD CHAIN

This attractive Bungalow offers well-proportioned accommodation to include a Lounge, a Kitchen/Dining Room, two double Bedrooms, a principal Bathroom and En Suite Shower Room. Further complemented by a good size Driveway, a Garage and a Southerly aspect rear Garden. Whilst the property has been lovingly cared for, it does now offer an excellent opportunity for cosmetic updating and further improvement.

The property enjoys a tucked away position within a highly favoured part of Bransgore village, only a short stroll from the village centre which offers an excellent range of amenities to include a good selection of shops, a Doctors Surgery and a number of public houses along with a most popular Primary School which is a feeder for both the highly regarded Highcliffe and Ringwood Comprehensives. The New Forest National Park is close to hand whilst the charming harbourside town of Christchurch and its neighbouring coastline is only a short drive away.

INTERNALLY:

A spacious Entrance Hall offers a storage cupboard and an airing cupboard.

The Lounge/Dining Room offers a window to the front, a fireplace and tin doors to the Kitchen/Dining Room. it offers selection of units and space for a selection of appliances.

The Kitchen/Dining Room enjoys an attractive outlook over the rear Garden along with external access.

A spacious Master Bedroom offers fitted furniture and is complemented by an En Suite Shower Room.

Bedroom Two a good size double room with fitted wardrobes.

The principal fully tiled Bathroom offers a matching suite.

EXTERNALLY:

There is an area of front Garden, and an adjacent Gravelled Driveway leads to the Detached Garage.

The South facing rear Garden offers a patio and an area of lawn with shrub borders.

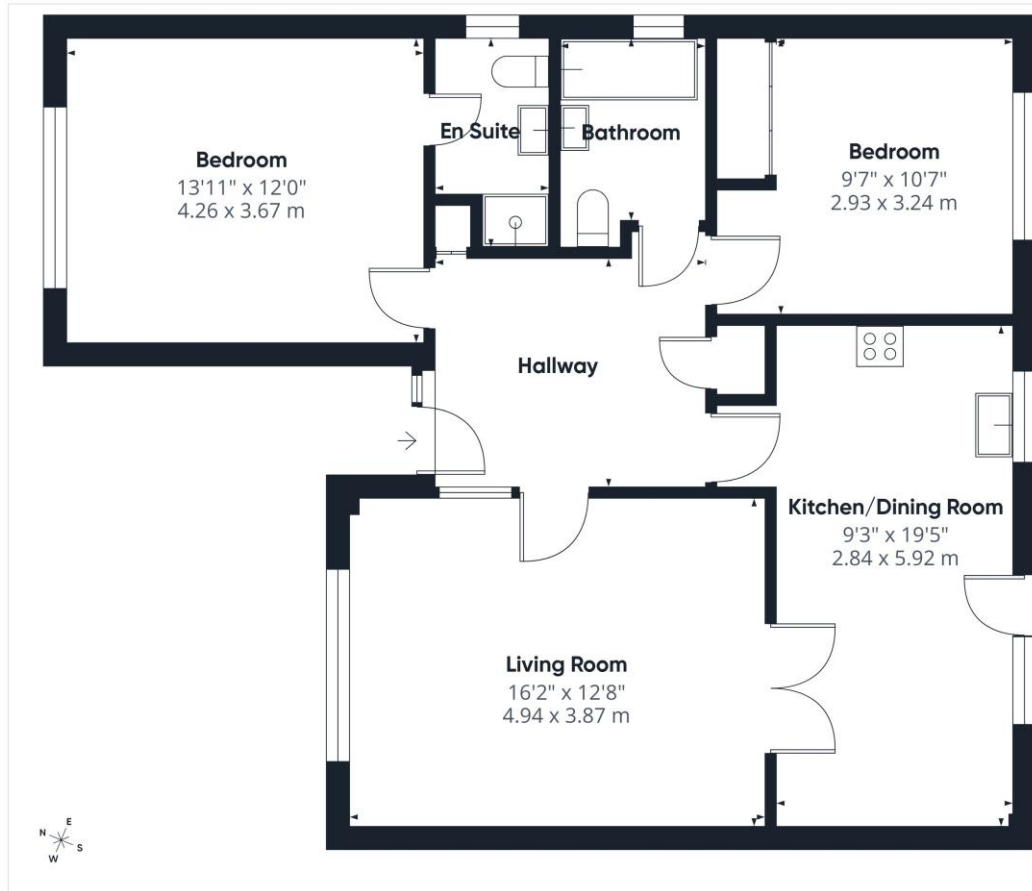
TENURE: FREEHOLD

COUNCIL TAX: E



KEY POINTS

- No forward chain
- South facing Garden
- Bathroom + En Suite
- Two double Bedrooms
- Driveway & Garage
- Kitchen/Dining Room



Approximate total area⁽¹⁾
872 ft²
81.1 m²

(1) Excluding balconies and terraces

Calculations reference the RICS IPMS 3C standard. Measurements are approximate and not to scale. This floor plan is intended for illustration only.

GIRAFFE 360



The Consumer Protection from Unfair Trading Regulations 2008 (CPRs). These details are for guidance only and complete accuracy cannot be guaranteed. If there is any point, which is of particular importance, verification should be obtained. They do not constitute a contract or part of a contract. All measurements are approximate. No guarantee can be given with regard to planning permissions or fitness for purpose. No apparatus, equipment, fixture or fitting has been tested. Items shown in photographs are NOT necessarily included. Interested Parties are advised to check availability and make an appointment to view before travelling to see a property.

THE PROPERTY PROFESSIONALS Christchurch | Southbourne | Highcliffe | Bransgore



Slades - Bransgore The Corner House, Ringwood Road, Bransgore, Christchurch, BH23 8AA
 01425 673311 | sales@sladesbransgore.co.uk
 Website www.sladeshomes.co.uk

