

29 Riversdale Road, Bournemouth, Dorset,  
BH6 4LH

Asking Price **£575,000**



Bedrooms



Living



Shower room



Driveway & Garage



EST  
1992

THE PROPERTY PROFESSIONALS  
Slades Estate Agents

Slades

# A wonderful home close to the banks of The River Stour.

**THIS SPACIOUS DETACHED BUNGALOW IS OFFERED FOR SALE CHAIN FREE AND IS WONDERFULLY LOCATED CLOSE TO WICK VILLAGE, JUST A FEW STEPS FROM THE BANKS OF THE RIVER STOUR.**

The property offers 1121 square feet of light, airy, and well-presented lateral living space with wood parquet flooring in most rooms. It also benefits from from Upvc double glazing and gas central heating throughout.

There are two double bedrooms, both with built in storage, the master bedroom benefiting from direct sun lounge access – a room purposefully made to unwind and enjoy views of the beautiful rear garden and wooded area behind.

An inviting living room boasts dual front aspect windows making for a particularly light and airy space, a log-burner effect gas fire, and striking wood parquet flooring completing this spacious room.

A separate kitchen enjoys views over the rear garden and provides a good range of storage. It also leads to a rear porch/vestibule which offers space for a washing machine and gives garden access.

An attached garage with electric roller door provides space for a car or great additional storage, a driveway to the front also providing off road parking for two cars.

Well stocked gardens surround the home, the rear garden providing secluded seating areas and a raised lawn to the rear boundary with a pleasant, wooded outlook to the rear.

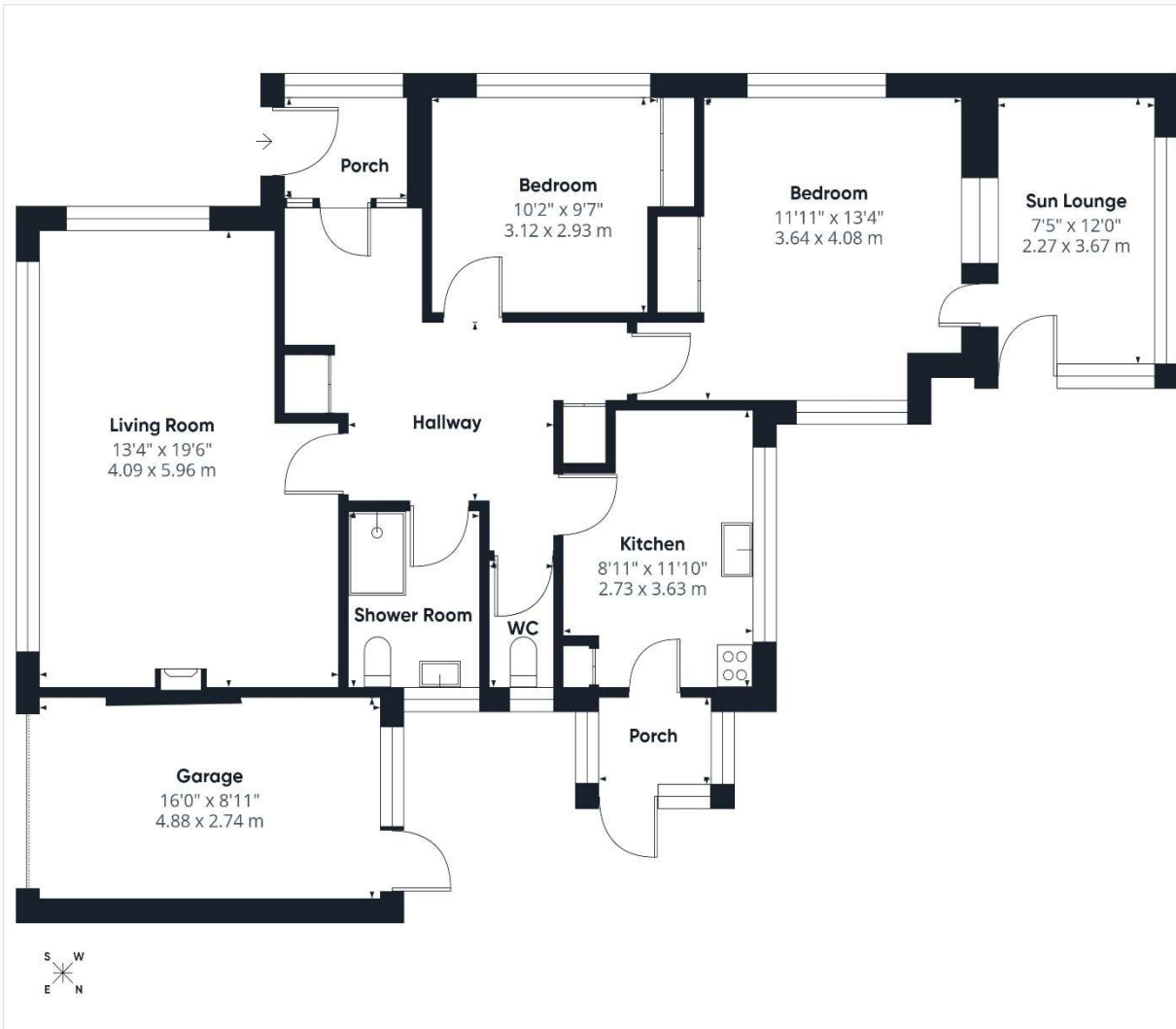
Offered for sale chain free immediate viewing of this excellent opportunity is available. Please call us to arrange your appointment and see this homes many fine features in person.

**THE TENURE: Freehold**

**COUNCIL TAX BAND: E**



**KEY POINTS**  
Sought after location  
Two double bedrooms  
Generous living room  
Garden room  
1121 Sq. Ft  
No onward chain



Approximate total area<sup>(1)</sup>  
1121 ft<sup>2</sup>  
104.2 m<sup>2</sup>

(1) Excluding balconies and terraces

Calculations reference the RICS IPMS 3C standard. Measurements are approximate and not to scale. This floor plan is intended for illustration only.

GIRAFFE 360



**The Consumer Protection from Unfair Trading Regulations 2008 (CPRs).** These details are for guidance only and complete accuracy cannot be guaranteed. If there is any point, which is of particular importance, verification should be obtained. They do not constitute a contract or part of a contract. All measurements are approximate. No guarantee can be given with regard to planning permissions or fitness for purpose. No apparatus, equipment, fixture or fitting has been tested. Items shown in photographs are NOT necessarily included. Interested Parties are advised to check availability and make an appointment to view before travelling to see a property.

# THE PROPERTY PROFESSIONALS Christchurch | Southbourne | Highcliffe | Bransgore



**Slades - Southbourne** 51 Southbourne Grove, Bournemouth, Dorset, BH6 3QT  
01202 428555 | [sales@sladessouthbourne.co.uk](mailto:sales@sladessouthbourne.co.uk)  
Website [www.sladeshomes.co.uk](http://www.sladeshomes.co.uk)

