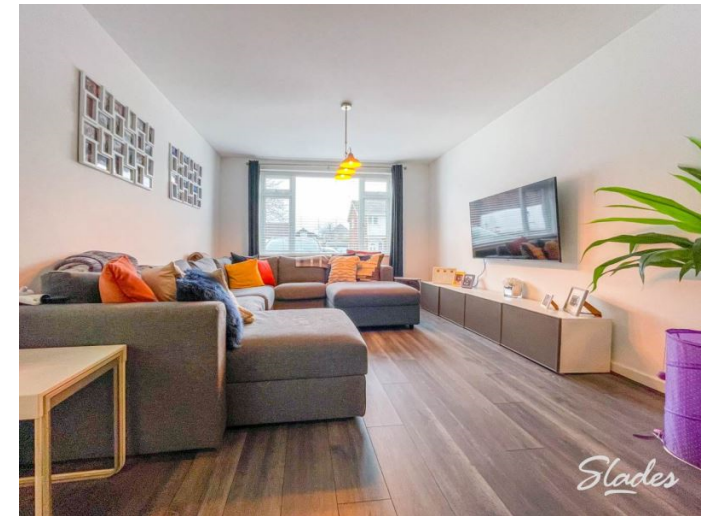


Arnewood Road , Southbourne, Bournemouth, Dorset, BH6 5DW

Available 06 March 2026

£1,850 PCM



- DEPOSIT £2,134.61
- Unfurnished
- 3 BED
- Gas central heating
- Garden
- Early viewings recommended
- Spacious lounge / diner
- Council tax band C
- EPC RATING D
- off road parking

EST
1992

THE PROPERTY PROFESSIONALS
Slades Lettings Agent

Slades

Property Description

Slades feel privileged to offer for rent a high spec 3 bedroom semi-detached house, located within a short walk to Stourfield Junior School and the local amenities. The property benefits from gas central heating, double glazing, good size lounge through to dining area, spacious modern kitchen / breakfast area with a breakfast bar including a integrated dish washer, fridge freezer, separate oven and grill, gas hob, downstairs WC / utility room, upstairs comprise of 2 large double bedrooms, modern white bathroom suite with a shower above bath, third single bedroom / study, off road parking for a couple of cars, easy to maintain decked garden area and let on an unfurnished basis. THE BAR STOOLS AND SOFA IN THE KITCHEN CAN REMAIN IN THE PROPERTY OR CAN BE TAKEN OUT. AVAILABE EARLY TO MID MARCH, VIEW NOW TO AVOID DISAPPOINTMENT. Council Tax Band: C
EPC Rating: D
Holding Deposit (1 week): £426.92
Security Deposit (5 weeks): £2134.61
Affordability Requirement: Minimum annual household income of £55,500 and a clean credit history.

Room Sizes

KITCHEN BREAKFAST AREA 4.12m (13'7") x 5.33m (17'6")
LOUNGE DINING 3.45m (11'4") x 5.86m (19'3")
MASTER BEDROOM 3.71m (12'3") x 4.03m (13'3")
SECOND BEDROOM 3.34m (11'0") x 3.68m (12'1")
THIRD BEDROOM 1.67m (5'6") x 2.07m (6'10")

