

2A Caroline Avenue, Mundeford,
Christchurch, Dorset, BH23 3JR

Asking Price **£595,000**



Bedrooms



Living



Shower Rooms



Parking



EST
1992

THE PROPERTY PROFESSIONALS
Slades Estate Agents

Slades

A Three Bedroom Detached Bungalow in Mundeford

THIS THREE BEDROOM DETACHED BUNGALOW IS SITUATED IN A POPULAR LOCATION JUST A SHORT DISTANCE FROM MUDEFORD QUAY AND AVON BEACH. THE PROPERTY IS WELL PRESENTED THROUGHOUT AND BENEFITS FROM OFF ROAD PARKING.

2A Caroline Avenue is an opportunity to purchase a well presented bungalow in a desirable location. The property is a short distance from the picturesque Mundeford Quay and sandy Avon Beach. Christchurch Town Centre with its 11th Century Priory, Town Quay and various shops, cafes, bars and restaurants is approximately 1.5 miles away.

The front door leads into the porch and in turn the entrance hall. The property benefits from three reception areas; a lounge, dining room and a conservatory extension. The kitchen features a range of base and eye level units with some integral appliances. There are three double bedrooms. One of the bedrooms has an ensuite with wc, basin and shower unit. There is a further shower room with wc, basin and shower room.

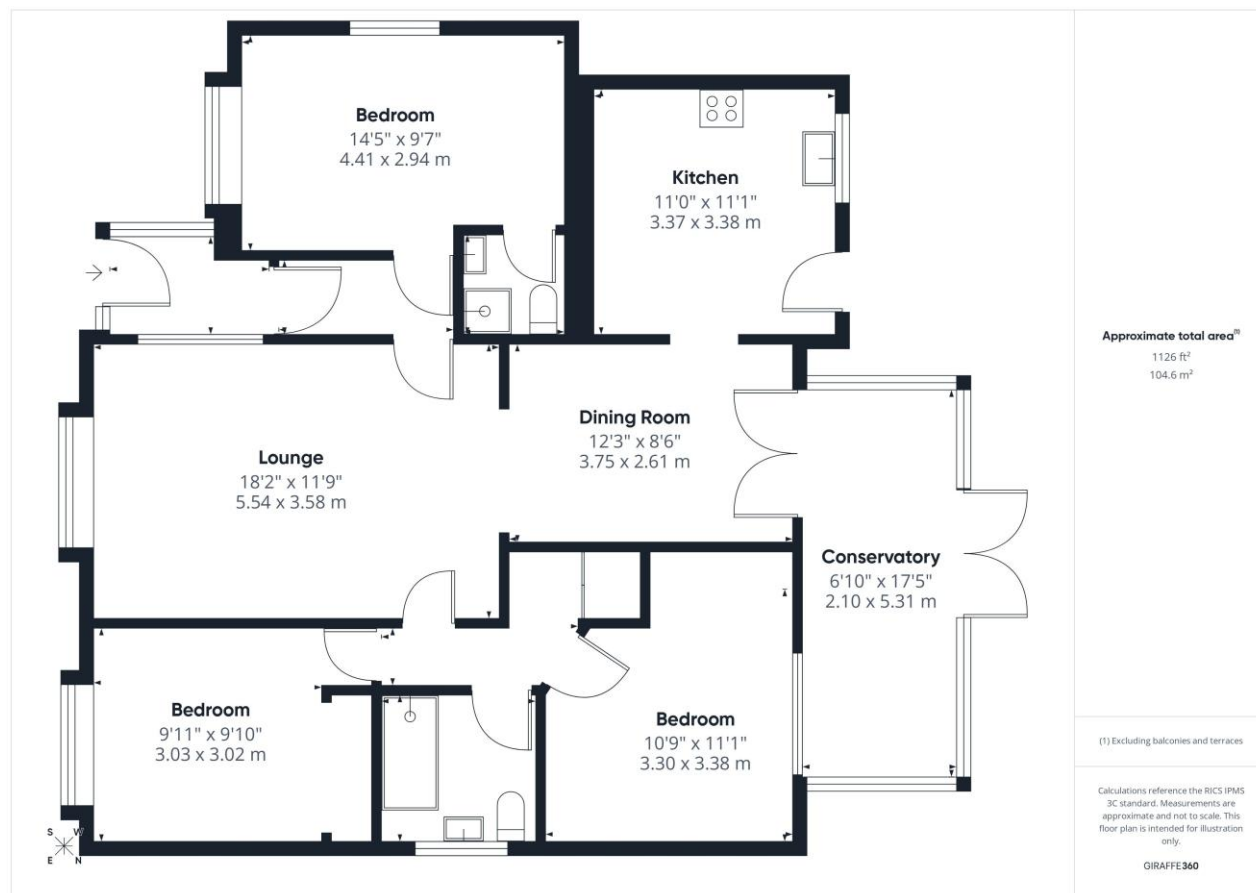
To the front of the property, a driveway provides OFF ROAD PARKING. The rear garden features sections of artificial lawn and patio. There is also a shed and gated side access.

TENURE: FREEHOLD
COUNCIL TAX BAND: D



KEY POINTS

- THREE BEDROOMS
- DETACHED BUNGALOW
- OFF ROAD PARKING
- TWO BATHROOMS
- CLOSE TO QUAY & BEACH
- WELL PRESENTED



THE PROPERTY PROFESSIONALS Christchurch | Southbourne | Highcliffe | Bransgore



Slades - Christchurch 7 Castle Street, Christchurch, Dorset, BH23 1DP
01202 474202 | enquiries@sladeschristchurch.co.uk
Website www.sladeshomes.co.uk

Slades