

7 Elmers Way, Bransgore, Christchurch,  
Dorset, BH23 8HB

Asking Price **£425,000**



Bedrooms



Living



Bathroom



Parking/Garage



EST  
1992

THE PROPERTY PROFESSIONALS  
Slades Estate Agents

*Slades*



# \*\*NO CHAIN\*\*

---

OFFERED WITH NO CHAIN, AN ATTRACTIVE, WELL MAINTAINED, TWO BEDROOM BUNGALOW WITH PLEASANT GARDENS, SITUATED IN A QUIET YET CONVENIENT VILLAGE LOCATION

An attractive and well-presented detached bungalow which it has been lovingly cared for and maintained but does now offer an opportunity for cosmetic modernisation to some areas. Further complemented by a brick paved Driveway, Garage and good size front and rear Gardens.

Bransgore village centre is within a short stroll and offers an excellent range of amenities to include an excellent range of day-to-day shops, a Medical Centre, a Veterinary Practice, three charming Public Houses and a highly regarded Primary School which is in turn a feeder for the most popular Ringwood and Highcliffe Comprehensives. The New Forest National Park is on hand, whilst the beautiful harbourside town of Christchurch and its neighbouring coastline is approximately 5 miles away.

## INTERNALLY:

An Entrance Porch flows openly to the Hallway with a useful storage cupboard and access to a useful Utility Area which we understand could be easily converted to facilitate a W.C

The spacious Living Room enjoys a dual aspect and a feature fireplace.

Enjoying a pleasant outlook and access to the rear Garden, the Kitchen/Breakfast Room offers a comprehensive range of units with space for a selection of appliances.

Bedroom One is a particularly spacious room with a built-in wardrobe whilst Bedroom Two is a smaller double room enjoying an outlook over the Rear Garden.

The modern fully tiled Shower Room offers a matching white suite.

## EXTERNALLY:

To the front of the property is a brick paved Driveway and Garage along with a lawned and shrubbed Garden.

The rear Garden enjoys areas of patio and lawn with shrub borders.

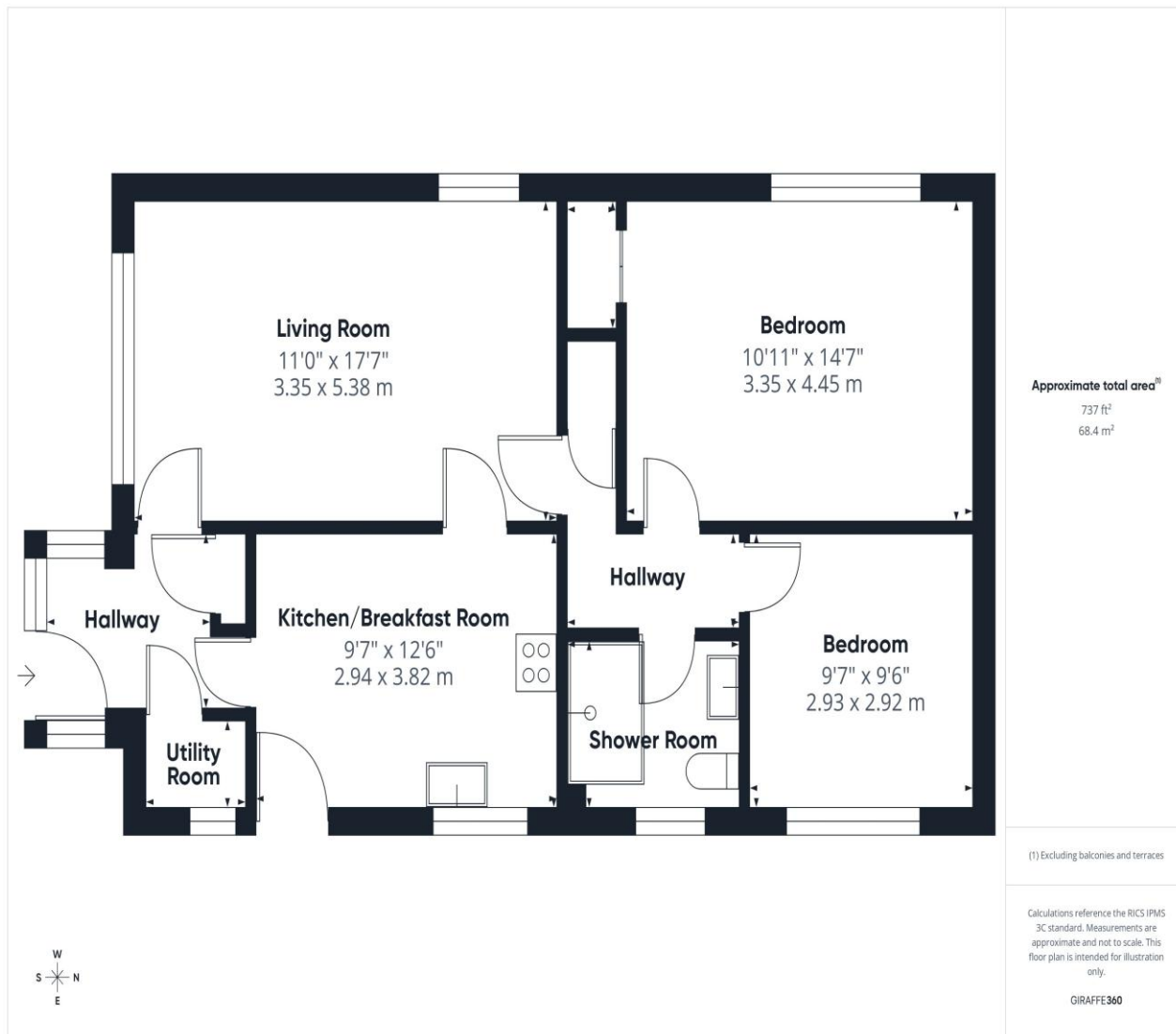
COUNCIL TAX BAND: D

TENURE: FREEHOLD



## KEY POINTS

- No forward chain
- Lovingly maintained
- Scope for cosmetic modernisation
- Driveway & Garage
- Attractive Gardens
- Popular village location



# THE PROPERTY PROFESSIONALS Christchurch | Southbourne | Highcliffe | Bransgore



**Slades - Bransgore** The Corner House, Ringwood Road, Bransgore, Christchurch, BH23 8AA  
01425 673311 | [sales@sladesbransgore.co.uk](mailto:sales@sladesbransgore.co.uk)  
**Website** [www.sladeshomes.co.uk](http://www.sladeshomes.co.uk)

