

62A, Stourcliffe Avenue, Southbourne,
Bournemouth, BH6 3PX

Guide Price **£350,000**



3

Bedrooms



1

Living



1

Bathroom/Ensuite



Y

Parking



EST
1992

THE PROPERTY PROFESSIONALS
Slades Estate Agents

Slades

A great first floor apartment offering over 1000sq ft of accommodation!

Offering well over 1000 square foot of accommodation, this spacious first floor apartment offers three double bedrooms along with a generous Kitchen/Breakfast room, a large living room and bathroom with a separate WC.

Set just 5 houses back from Southbourne Overcliff Drive, with 7 miles of golden sandy beaches below, the apartment offers easy access to both the beach and Southbourne Grove, being just a short level walk away.

The apartment benefits from a private entrance, with all rooms accessed of the spacious landing.

The living room is an exceptionally generous size, offering an abundance of character with high ceilings and a large bay window which also offers some views of the sea.

The Kitchen/Breakfast room offers space for a breakfast table and has been

fitted with a range of eye level and base units with some built in appliances and a breakfast bar.

All three bedrooms are doubles and are served by a bathroom with a separate WC adjacent.

Externally, there is an allocated parking space set to the front of the building.

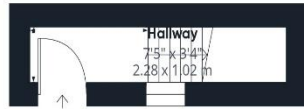
The apartment is held on a leasehold basis with approximately 149 years remaining, maintenance is on an as and when basis.

Offered for sale with no onward chain, an internal inspection comes highly recommended!



KEY POINTS

- Three bedrooms
- 5 houses back from clifftop
- Sea glimpses
- Kitchen/Breakfast room
- Generous Living room
- Off road parking
- No onward chain
- Over 1000 square foot



Ground Floor



Floor 1



Approximate total area^m

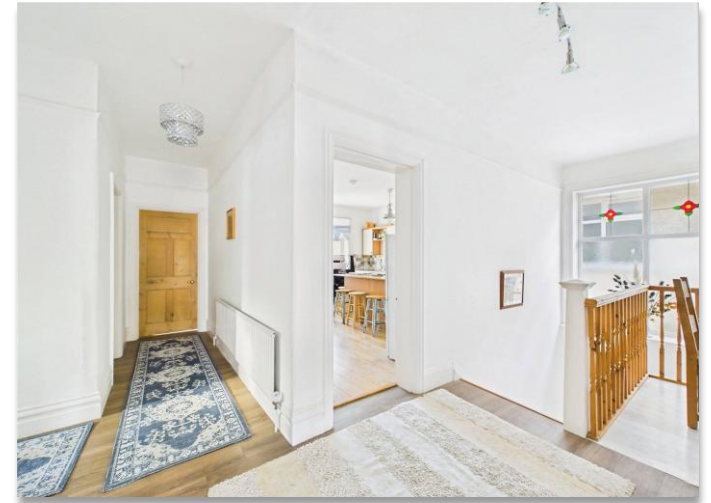
1047 ft²

97.2 m²

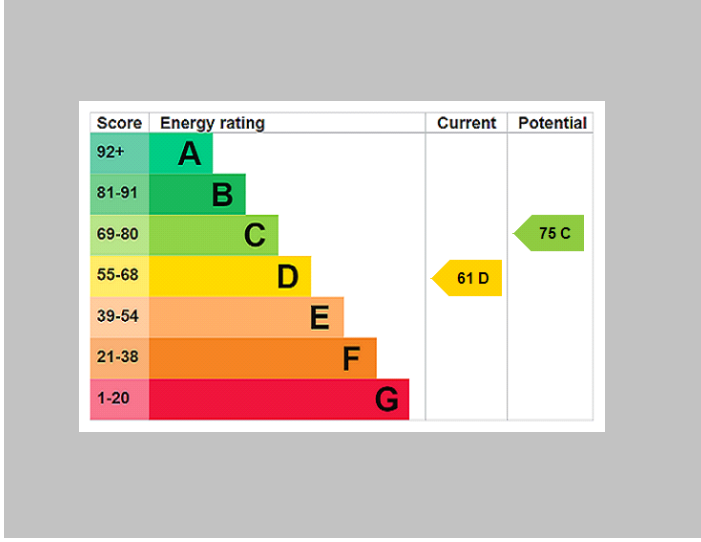
(1) Excluding balconies and terraces

Calculations reference the RICS IPMS 3C standard. Measurements are approximate and not to scale. This floor plan is intended for illustration only.

GIRAFFE360



THE PROPERTY PROFESSIONALS Christchurch | Southbourne | Highcliffe | Bransgore



Slades - Southbourne 51 Southbourne Grove, Bournemouth, Dorset, BH6 3QT
 01202 428555 | sales@sladessouthbourne.co.uk
 Website www.sladeshomes.co.uk

