

Skylarks, 257-259 Belle Vue Road,
Southbourne, Bournemouth, Dorset, BH6

£220,000 - £425,000

 1/2

Bedrooms

 1

Living

 1/2

Bathroom/Ensuite



Some allocated



EST
1992

THE PROPERTY PROFESSIONALS
Slades Estate Agents

Slades

A newly completed development of luxury apartments.

SKYLARKS IS A BRAND-NEW DEVELOPMENT OF LUXURY ONE AND TWO BEDROOM APARTMENTS SET IN A GREAT LOCATION CLOSE TO HENGISTBURY HEAD, LOCAL BEACHES, AND THE RIVER AT WICK.

Offering timelessly elegant Arts and Crafts inspired architecture combined with contemporary elements and interiors, Skylarks is an exciting new development constructed by Harlequin Homes.

Now completed we are delighted to offer immediate viewing of the show home and all other available apartments. Reservations have already been made so why not take this opportunity and ensure you don't miss out!

Well located, Skylarks gives easy access to Tuckton High street and is approximately a 1 mile walk from the popular Southbourne Grove. The beauty spot of Hengistbury Head is also less than 1 mile away, as are the areas sandy beaches, and The River Stour at Wick.

The development comprises of 6 one-bedroom apartments, 6 two-bedroom apartments, and a two bedroom maisonette (The Lodge) which has its own private entrance and patio area giving 'house like' accommodation.

All apartments have been thoughtfully finished with good quality fixtures and fittings. Some highlights to include;

KITCHENS: Individually designed to include task-lighting beneath high level wall units, and integrated appliances to include an induction hob, electric oven, extractor hood, fridge freezer, dishwasher and washing machine.

BATHROOMS: To be fitted with contemporary white sanitary ware, complimenting contemporary brassware, porcelain wall and floor tiling, under sink vanity units, polished chrome towel rails, and a wall or ceiling mounted shower head with separate handheld shower and wall-mounted controls.

GENERAL FINISHES: Amtico (or similar) flooring in all apartment hallways, bathrooms and kitchen/living areas. Carpeted bedrooms. Energy efficient recessed LED lighting in kitchens and bathrooms. Telephone and data points to all principal rooms. Sky+ connectivity in living room and master bedroom. Video entry phone in all apartments. Double glazed windows. Ecostrad, smart-ceramic electric heating.

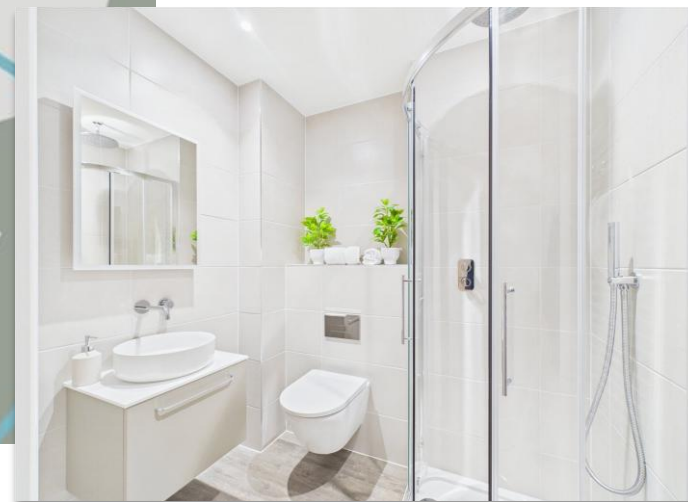
Most two-bedroom apartments benefit from allocated parking with nearby roads offering unrestricted parking.

THE TENURE: All homes will benefit from an equal share within the freehold to building with lease details to follow shortly. There will be no ground rent payable, please ask for the latest proposed maintenance schedule. There will be no restrictions on letting over short or long periods.



KEY POINTS

- Brand new apartments
- Newly completed
- Excellent specification
- Close to Hengistbury Head
- Immediate viewing available



The Consumer Protection from Unfair Trading Regulations 2008 (CPRs). These details are for guidance only and complete accuracy cannot be guaranteed. If there is any point, which is of particular importance, verification should be obtained. They do not constitute a contract or part of a contract. All measurements are approximate. No guarantee can be given with regard to planning permissions or fitness for purpose. No apparatus, equipment, fixture or fitting has been tested. Items shown in photographs are NOT necessarily included. Interested Parties are advised to check availability and make an appointment to view before travelling to see a property.

THE PROPERTY PROFESSIONALS

Christchurch | Southbourne | Highcliffe | Bransgore



EPC Ratings vary.
individual apartment ratings
are available upon request.

Slades - Southbourne 51 Southbourne Grove, Bournemouth, Dorset, BH6 3QT
01202 428555 | sales@sladessouthbourne.co.uk
Website www.sladeshomes.co.uk

Slades