

Reef Manor, 5 Wollstonecraft Road,
Boscombe Manor, Bournemouth, Dorset,

£220,000 - £500,000

 1-3

Bedrooms

 1

Living

 1-2

Bathroom/Ensuite



Allocated Parking



EST
1992

THE PROPERTY PROFESSIONALS
Slades Estate Agents

Slades

New coastal homes now available for immediate viewing!

JUST A SHORT WALK FROM THE AREAS SANDY BEACHES, REEF MANOR IS A NEW COASTAL DEVELOPMENT OF 1, 2 AND 3-BEDROOM APARTMENTS. NOW AVAILABLE FOR IMMEDIATE VIEWING!

Whether you are searching for a permanent home or a weekend retreat, Reef Manor presents an excellent opportunity to purchase a newly built home just a short walk from Boscombe Pier and Bournemouth's 7 mile stretch of sandy beaches. The development is pet friendly and there are no restrictions on short term lets hence a purchase here could also make a great investment.

All apartments come full of designer features such as floor to ceiling windows, motion sensor lighting to bathrooms, and kitchens boasting Silestone worktops and high-end Bosch appliances. Each apartment also benefits from underfloor heating and comes complete with a comprehensive 10-year warranty.

We currently have a range of 1, 2 and 3-bedroom homes ready for immediate viewing and purchase, many of which offer glass enclosed balconies and allocated parking.

Individual floorplans and virtual tours will soon be available, but for immediate information and booking please call us, we would be delighted to assist.

THE TENURE: Each apartment will benefit from a 250-year lease.

Annual maintenance charges for each apartment do vary, please contact us for further information.

NB: Photos contained within these details have been taken from plot 22 and plot 6 they are indicative of style and finish only. Other apartments do vary.

Prices from £220,000 - £500,000



KEY POINTS

- New homes now complete!
- Sought after cliff top location
- Designer finishes throughout
- Underfloor heating
- 10-year warranty
- Many homes with balconies

Availability and price list

FIRST FLOOR

Plot 4 - Three-bedroom apartment with balcony - 866 Sq. Ft -	£450,000
Plot 5 - Two-bedroom apartment with balcony - 745 Sq. Ft -	£425,000
Plot 6 - Two-bedroom apartment with balcony - 744 Sq. Ft -	£400,000
Plot 12 - Three-bedroom apartment with balcony - 906 Sq. Ft -	£450,000

SECOND FLOOR

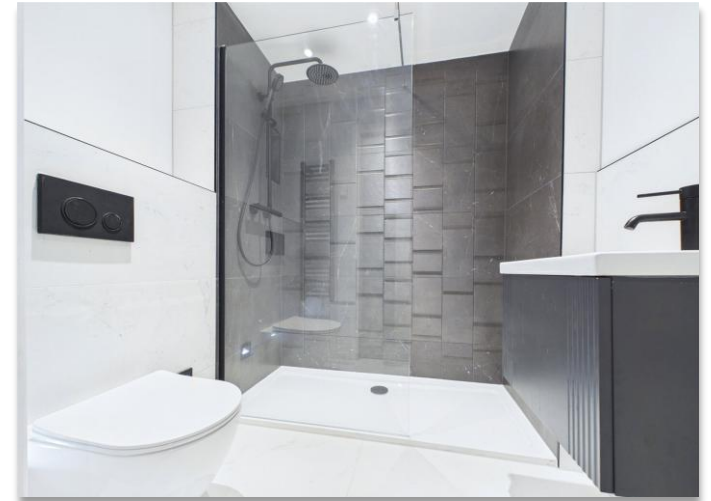
Plot 13 - Three-bedroom apartment with balcony - 866 Sq. Ft -	£475,000
Plot 14 - Two-bedroom apartment with balcony - 745 Sq. Ft -	£425,000
Plot 15 - Two-bedroom apartment with balcony - 744 Sq. Ft -	£425,000
Plot 19 - Two-bedroom apartment - 743 Sq. Ft -	£325,000
Plot 20 - Two-bedroom apartment with balcony - 794 Sq. Ft -	£375,000
Plot 21 - Three-bedroom apartment with balcony - 906 Sq. Ft -	£450,000

THIRD FLOOR

Plot 22 - Three-bedroom apartment with balcony - 866 Sq. Ft -	£475,000
Plot 24 - Two-bedroom apartment with balcony - 744 Sq. Ft -	£425,000
Plot 26 - One bedroom apartment - 469 Sq. Ft -	£220,000
Plot 28 - Two-bedroom apartment with balcony - 771 Sq. Ft -	£425,000
Plot 29 - Three-bedroom apartment with balcony - 906 Sq. Ft -	£450,000

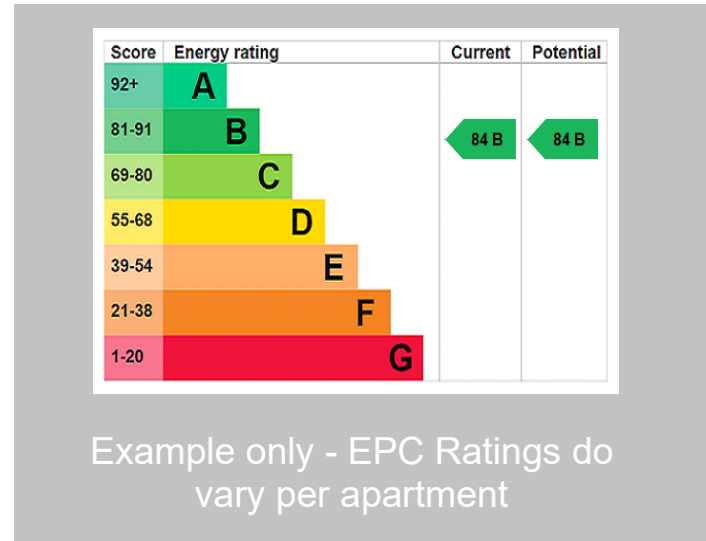
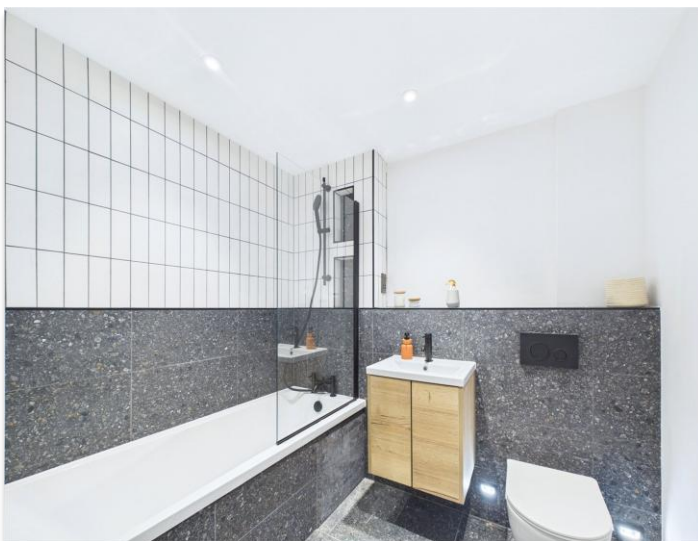
FOURTH/TOP FLOOR

Plot 32 - Three-bedroom apartment with terrace - 971 Sq. Ft -	£500,000
---	----------



THE PROPERTY PROFESSIONALS

Christchurch | Southbourne | Highcliffe | Bransgore



Slades - Southbourne 51 Southbourne Grove, Bournemouth, Dorset, BH6 3QT
01202 428555 | sales@sladessouthbourne.co.uk
Website www.sladeshomes.co.uk

