



Ora Mare

9-11 Ravine Road | Portman Estate | Bournemouth | Dorset | BH5 2DT

FINE & COUNTRY

ORA MARE



‘Ora Mare’ is an outstanding new development of four spacious and luxuriously appointed townhouses, wonderfully located close to Southbourne’s high street and beaches.



KEY FEATURES

'Ora Mare' is a stunning new development of four luxury townhouses wonderfully located close to the area's golden sandy beaches, and within walking distance of Southbourne Grove with its wide arrange of eateries, coffee shops, and shopping facilities.

Taking inspiration from the local surroundings, each home has been interior designed by the talented Studio Sempura, a materials palette to include soft neutral's, blue accents, and bronze brassware creating a timeless, luxury feel.

Completed by a team of skilled professionals to include well regarded local companies such as Kitchen Elegance and Lamco Design, these are very special homes indeed.

Creating an immediate sense of space, each home benefits from a generous entrance hallway, solid wood panel doors leading to both living areas and a ground floor cloakroom.

Kitchen/dining/day rooms feature bi-folding doors leading out to private enclosed rear gardens, offering a sociable day to day space, and a great place for entertaining.

Superbly appointed kitchen areas offer an extensive range of storage and a large Island with space for multiple stools. They boast a full range of integrated appliances to include double ovens with a heated draw, induction hobs, dishwashers, and chilled wine cabinets. An adjacent utility area then offering space for a washing machine and offering further storage.

Formal lounge areas feature bay windows to the front, wood panel detail, and provision for wall mounted TV's, making the perfect place to relax.

Impressive return staircases with oak balustrades and stairwell pendant lighting lead to the first and second floors, over which there are four generous double bedrooms.

All bedrooms come complete with a bespoke range of fitted wardrobes and feature luxury en-suite shower rooms. The stunning master suites offering sumptuous en-suite bathrooms and a recessed walk-in wardrobe.

Outside, attractive brick driveways provide off road parking with each home having EV charging points and a private lockable store. Rear gardens have been individually landscaped and offer attractive yet low maintenance spaces featuring patios, raised beds, and artificial lawns.





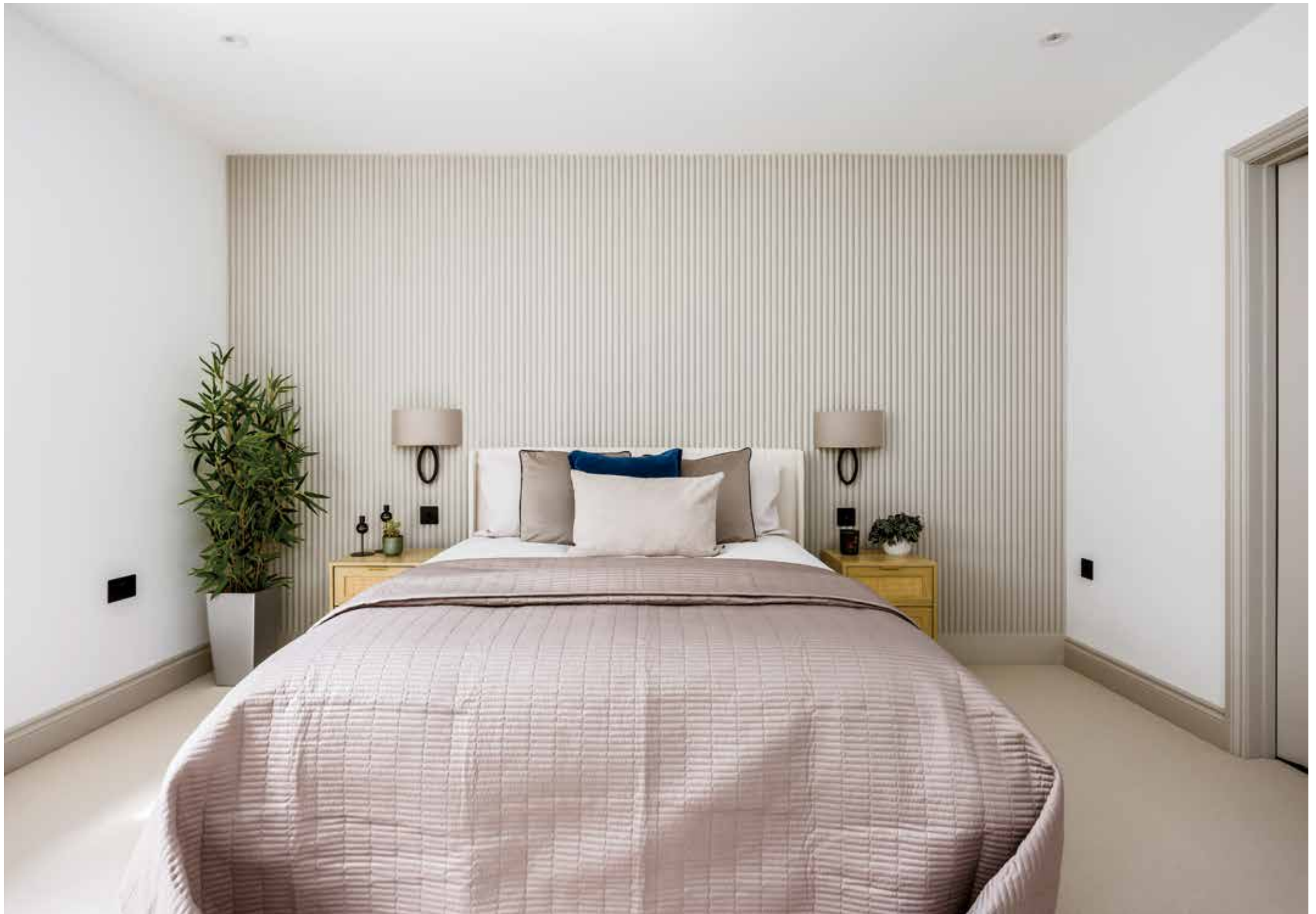


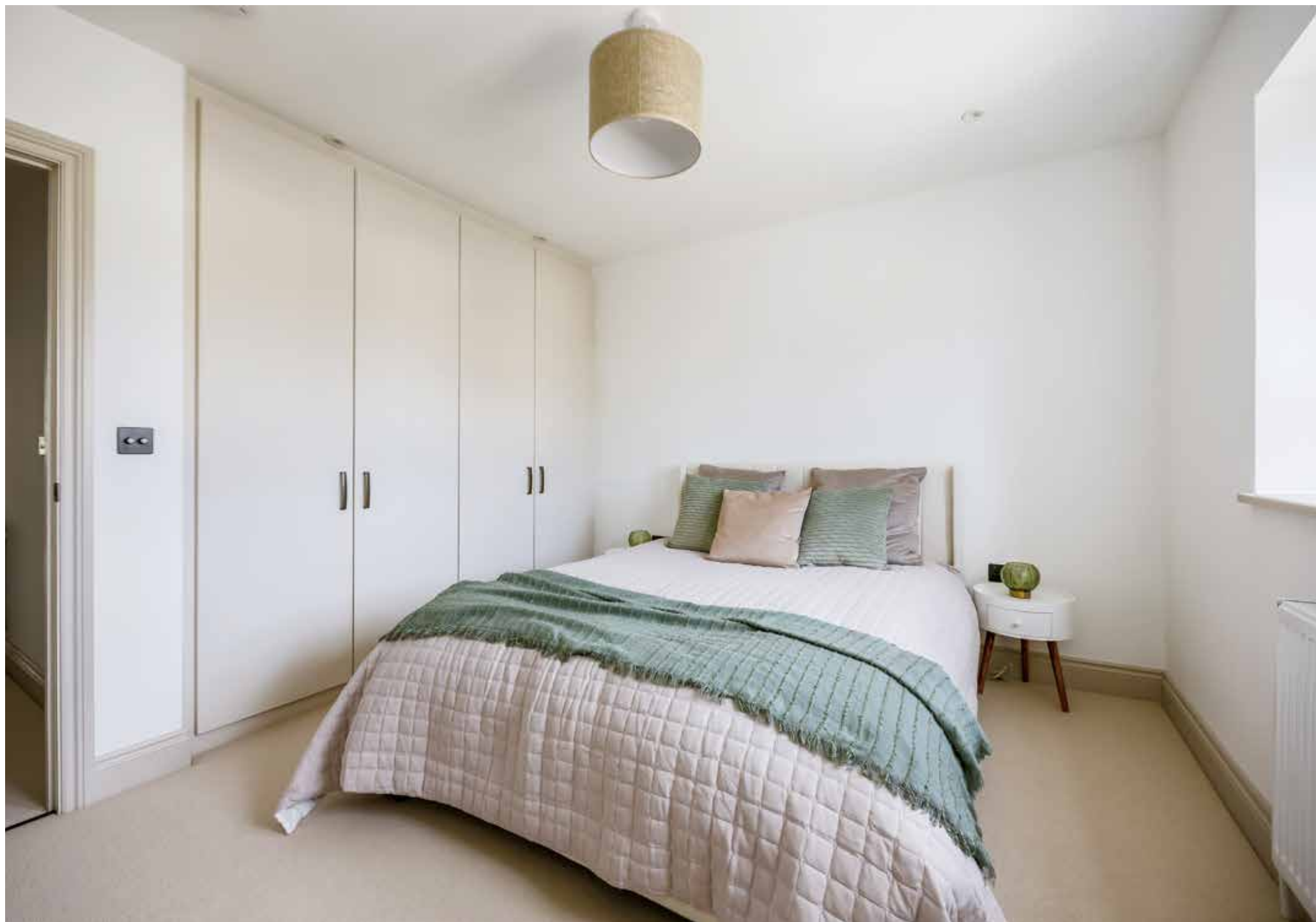


























INFORMATION

Tenure: Freehold
EPC Rating: B
Council Tax Band: F



Registered in England and Wales. Company Reg. No. 13105875
Registered office address: 10 Bridge Street, Christchurch, Dorset, BH23 1EF. Trading As: Fine & Country Christchurch Ltd
copyright © 2025 Fine & Country Ltd.



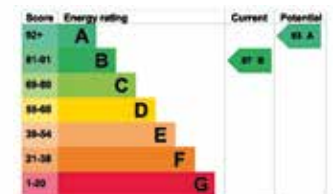
Ground Floor



Floor 1



Floor 2





FINE & COUNTRY

Fine & Country is a global network of estate agencies specialising in the marketing, sale and rental of luxury residential property. With offices in over 300 locations, spanning Europe, Australia, Africa and Asia, we combine widespread exposure of the international marketplace with the local expertise and knowledge of carefully selected independent property professionals.

Fine & Country appreciates the most exclusive properties require a more compelling, sophisticated and intelligent presentation – leading to a common, yet uniquely exercised and successful strategy emphasising the lifestyle qualities of the property.

This unique approach to luxury homes marketing delivers high quality, intelligent and creative concepts for property promotion combined with the latest technology and marketing techniques.

We understand moving home is one of the most important decisions you make; your home is both a financial and emotional investment. With Fine & Country you benefit from the local knowledge, experience, expertise and contacts of a well trained, educated and courteous team of professionals, working to make the sale or purchase of your property as stress free as possible.

We value the little things that make a home

THE FINE & COUNTRY
FOUNDATION

The production of these particulars has generated a £10 donation to the Fine & Country Foundation, charity no. 1160989, striving to relieve homelessness.

Visit fineandcountry.com/uk/foundation

Fine & Country Christchurch
7 Castle Street, Christchurch, Dorset, BH23 1DP
01202 488988 | christchurch@fineandcountry.com

