

214 Harewood Avenue, Bournemouth,
Dorset, BH7 7BQ

Guide Price **£465,000**



Bedrooms



Living



Bathroom/Ensuite



Parking/Garage



EST
1992

THE PROPERTY PROFESSIONALS
Slades Estate Agents

Slades

A superb bungalow offering lots of potential!

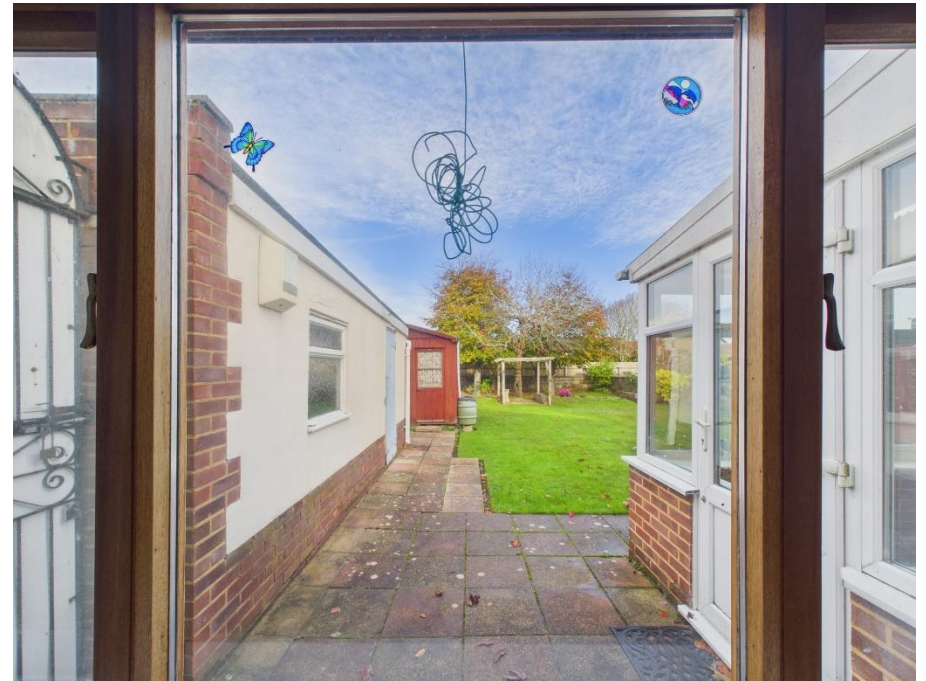
Set in a sought-after location, this spacious detached bungalow offers a huge amount of potential, whether it be lightly modernise or take advantage of the generous rear garden and extend and remodel.

The bungalow offers over 1200 square foot of accommodation to include two double bedrooms, an extended lounge/diner, a kitchen, a shower room with a separate WC adjacent and two large sunrooms set to both the front and rear of the bungalow.

Externally, the bungalow is set back from Harewood avenue offering ample off-road parking with a driveway to the side leading to the detached garage. The rear garden is a great size, measuring over 60' in length and is predominantly laid to lawn.

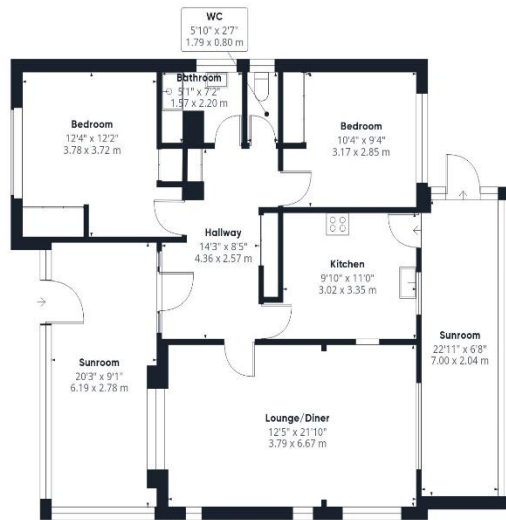
Additionally, the bungalow offers gas fired central heating via a floor mounted Potterton boiler and is UPVC double glazed throughout bar a couple of feature original side windows.

Offered for sale with no onward chain, and sure to be popular, an internal inspection comes highly recommended!

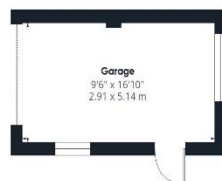


KEY POINTS

- 2 double bedrooms
- Extended Lounge/Diner
- Lots of potential
- Shower room with separate WC
- Off road parking & garage
- Great sized rear garden
- No onward chain



Ground Floor Building 1



Ground Floor Building 2

Approximate total area⁽¹⁾

1365 ft²

126.8 m²

(1) Excluding balconies and terraces

Calculations reference the RICS IPMS 3C standard. Measurements are approximate and not to scale. This floor plan is intended for illustration only.

GIRAFFE360



THE PROPERTY PROFESSIONALS

Christchurch | Southbourne | Highcliffe | Bransgore



Slades - Southbourne 51 Southbourne Grove, Bournemouth, Dorset, BH6 3QT
01202 428555 | sales@sladessouthbourne.co.uk
Website www.sladeshomes.co.uk

Slades