

6 Bodowen Road, Burton, Christchurch, BH23 7JL

Asking Price **£400,000**



Bedrooms



Living



Bathroom



Parking & Garage



EST  
1992

THE PROPERTY PROFESSIONALS  
Slades Estate Agents

*Slades*

# DETACHED BUNGALOW... SOUTH FACING GARDEN...NO CHAIN

---

THIS 2 BEDROOM DETACHED BUNGALOW IS SITUATED IN A POPULAR VILLAGE CUL DE SAC AND ENJOYS A SOUTH FACING REAR GARDEN.

Bodowen Road is just a short level walk from the local village green with a Convenience Shop. Christchurch Town Centre with all its amenities is approximately 1.5 miles distant.

The front door leads to a spacious entrance hall with a useful storage cupboard.

The 'U' shape kitchen/diner and living room (over 26 ft combined) is set to the rear of the property and provides a bright and sociable hub with plenty of space for cooking, dining and relaxing.

To the front of the property there are two comfortable double bedrooms, both well-proportioned and benefitting from built in wardrobes

The Bathroom features a large walk-in shower, wash hand basin, heated towel rail and w.c.

Outside the rear garden enjoys a south facing aspect with an area of patio to the immediate rear of the property form the living room.

To the front there is a driveway along with access to a garage, ideal for secure parking, a workshop or additional storage.

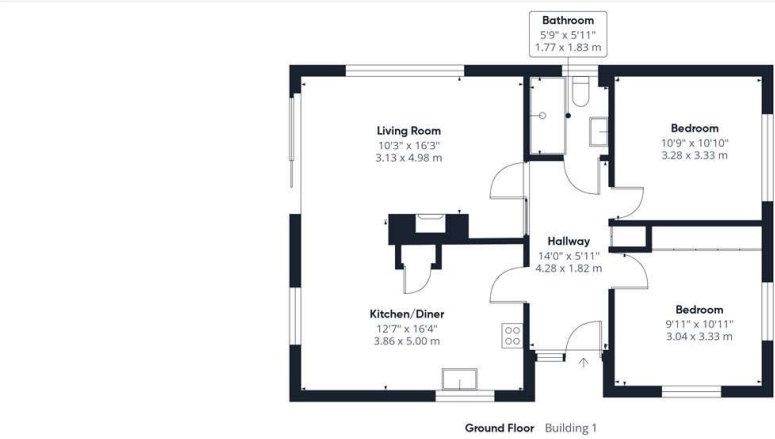
Tenure: Freehold  
Council Tax Band: D



## KEY POINTS

- NO CHAIN
- DETACHED BUNGALOW
- SOUTH FACING GARDEN
- GARAGE
- TWO DOUBLE BEDROOMS
- SOUGHT AFTER LOCATION





Approximate total area<sup>(1)</sup>  
901 ft<sup>2</sup>  
83.8 m<sup>2</sup>

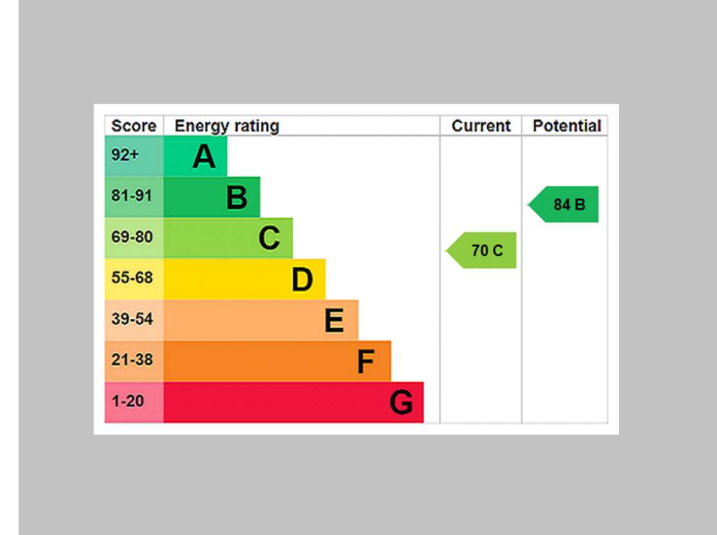
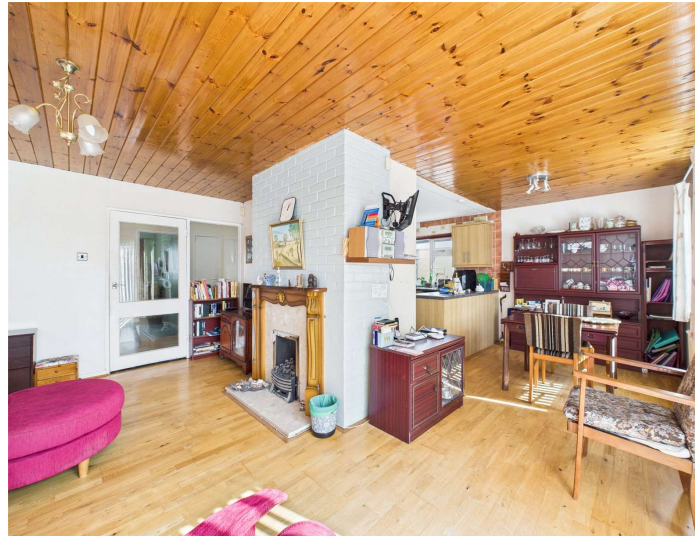
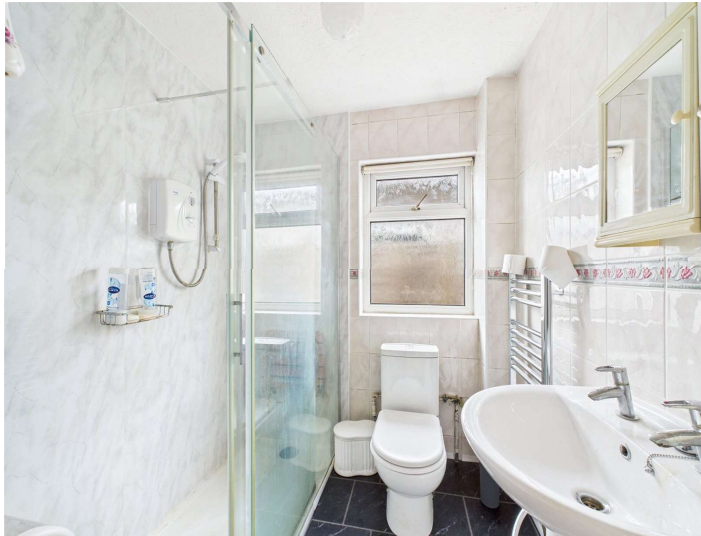
(1) Excluding balconies and terraces

Calculations reference the RICS IPMS 3C standard. Measurements are approximate and not to scale. This floor plan is intended for illustration only.

GIRAFFE360



# THE PROPERTY PROFESSIONALS Christchurch | Southbourne | Highcliffe | Bransgore



Slades - Christchurch 7 Castle Street, Christchurch, Dorset, BH23 1DP  
01202 474202 | [enquiries@sladeschristchurch.co.uk](mailto:enquiries@sladeschristchurch.co.uk)  
Website [www.sladeshomes.co.uk](http://www.sladeshomes.co.uk)

