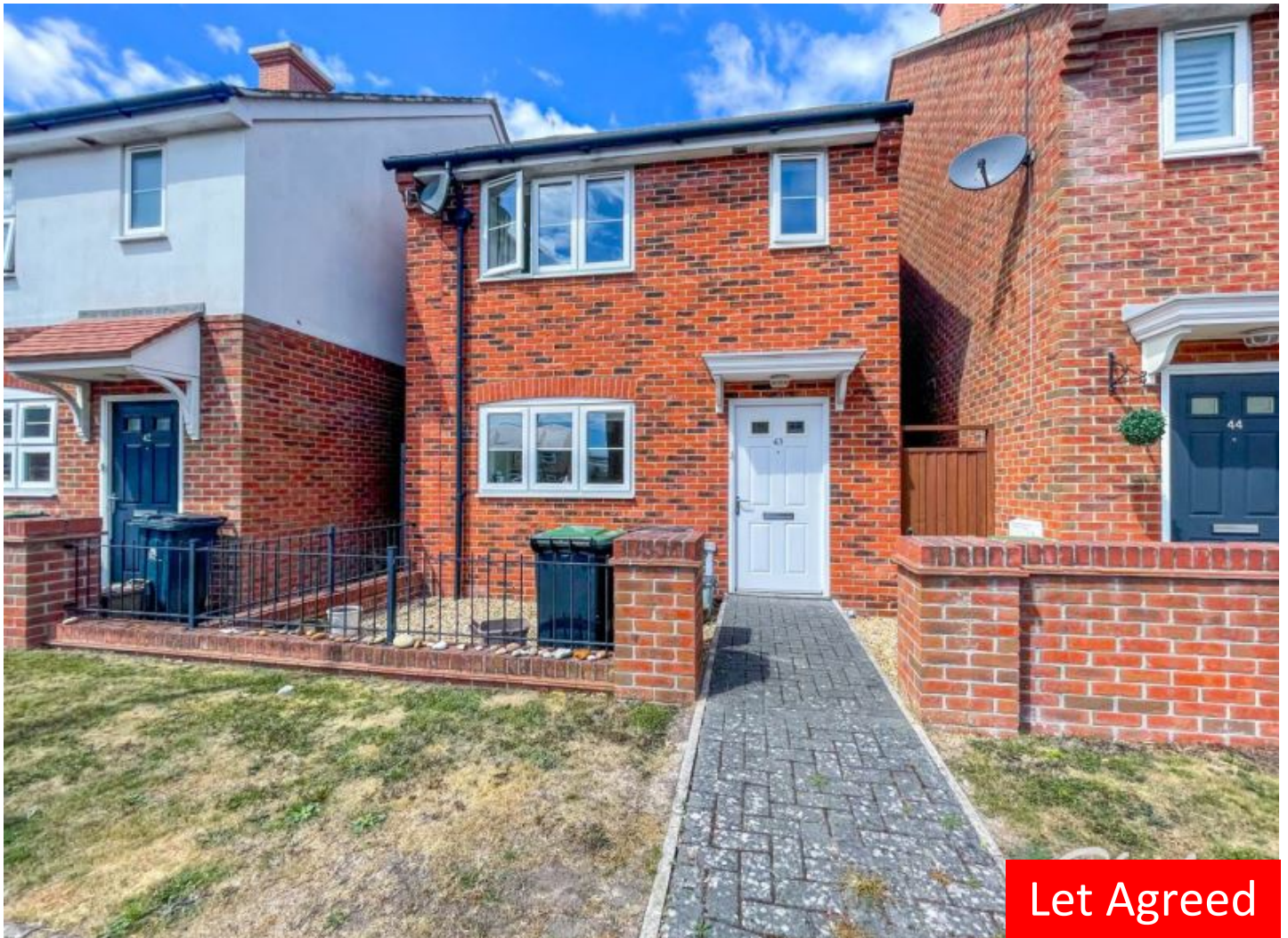


Grange Road , Mundeford ,
Christchurch , Dorset , BH23 4JD

Available 01 September 2025

£1,650 PCM



- £1903.84 Deposit
- 3 Bedroom Detached House
- EPC Rating: C
- Unfurnished
- 3 BED
- Detached House
- off road parking



EST
1992

THE PROPERTY PROFESSIONALS
Slades Lettings Agent

Slades

Property Description

A modern 3 double bedroom detached house, located within a short walk to Mudeford Quay, Mudeford School catchment area and the local amenities. New carpet to be fitted in the lounge, stairs and landing. The property benefits from double glazing throughout, gas central heating, 31 ft open planned lounge / dining area with a high fitted kitchen including integrated dish washer, washing machine, fridge freezer, electric oven with hob, patio doors from the lounge leading to an easy to maintain laid to lawn garden area with access to the off road parking space at the rear and the garage, downstairs modern WC, under stairs storage area, en-suite double shower cubicle to the master bedroom, modern family bathroom with a shower attached, further storage cupboard upstairs and let on an unfurnished basis. AVAILABLE FROM THE 01/09/2025

Room Sizes

LOUNGE AND KITCHEN - 4.67m (15'4") x 9.49m (31'2")

MASTER BEDROOM - 2.66m (8'9") x 3.47m (11'5")

SECOND BEDROOM - 2.33m (7'8") x 4.29m (14'1")

THIRD BEDROOM - 2.23m (7'4") x 3.17m (10'5")



EPC Rating

