

105 Priory View Road, Burton, Christchurch,
Dorset, BH23 7HH

Asking Price **£285,000**



Bedrooms



Living



Bathroom/Ensuite



Parking



EST
1992

THE PROPERTY PROFESSIONALS
Slades Estate Agents

Slades

SOUTH-WESTERLY GARDEN ... 2 BEDROOM HOUSE...PARKING

ENJOYING A SOUTH-WESTERLY FACING REAR GARDEN WITH WOODED ASPECT, THIS 2 BEDROOM HOUSE HAS AN ALLOCATED PARKING SPACE AND IS SET WITHIN THE POPULAR VILLAGE OF BURTON.

105 Priory View Road is an opportunity to purchase a 2 bedroom house in the popular village of Burton. A local shop is close by and also within the village is a school and parish church. Christchurch Town Centre is approximately 2 miles distant.

A double glazed entrance door leads to a Spacious living area. The kitchen has a range of fitted units with worktop space over. Half tiled walls and ceramic tiled floor. Integrated oven. 4-ring burner gas hob with splashback and extractor cooker hood over. Space for fridge/freezer. Washing machine. Sink with single drainer and mixer tap. Rear door to garden.

From the lounge/dining room, stairs lead to the first floor landing. Hatch to roof space. Airing/storage cupboard.

There are 2 bedrooms. Both of generous sizes.

The bathroom has fully tiled walls and comprises panelled bath, shower, vanity basin with cupboard under and w.c.

There is an ALLOCATED PARKING SPACE to the front of the property. The front garden is enclosed by a picket fence and Pergola. Pathway to front door.

The south-west facing rear garden has a paved patio and is laid to lawn. Outside tap. SHED. Picket fence. Rear timber gate.

TENURE: FREEHOLD
COUNCIL TAX BAND: C

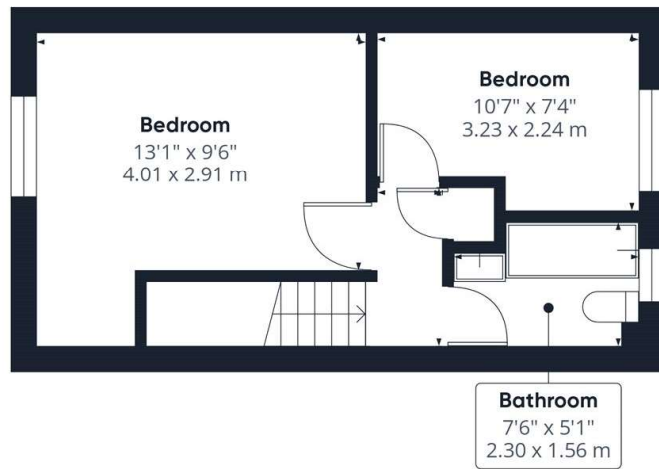


KEY POINTS

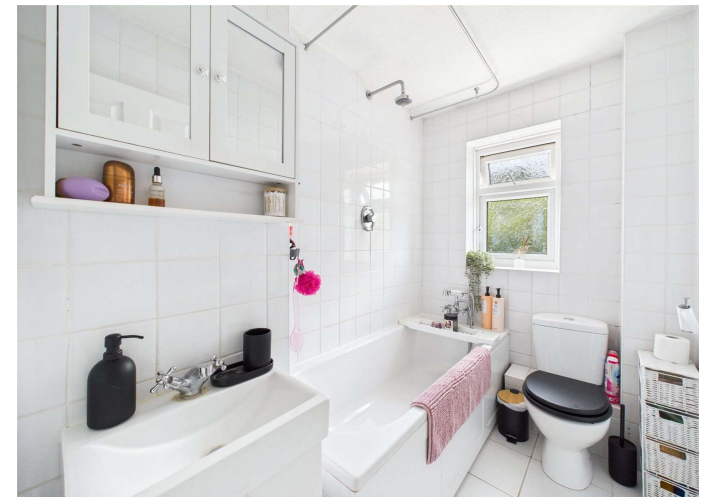
- POPULAR LOCATION
- TWO BEDROOMS
- KITCHEN/DINING ROOM
- ALLOCATED PARKING SPACE
- WOODED ASPECT TO REAR
- SOUTH-WESTERLY REAR GARDEN



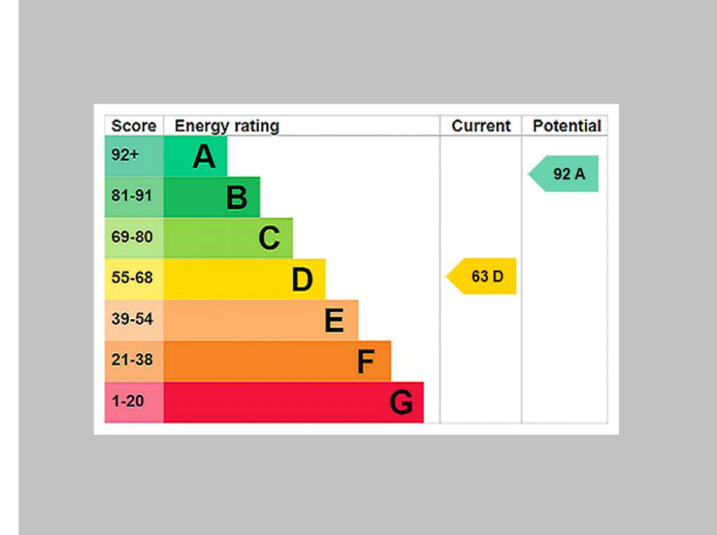
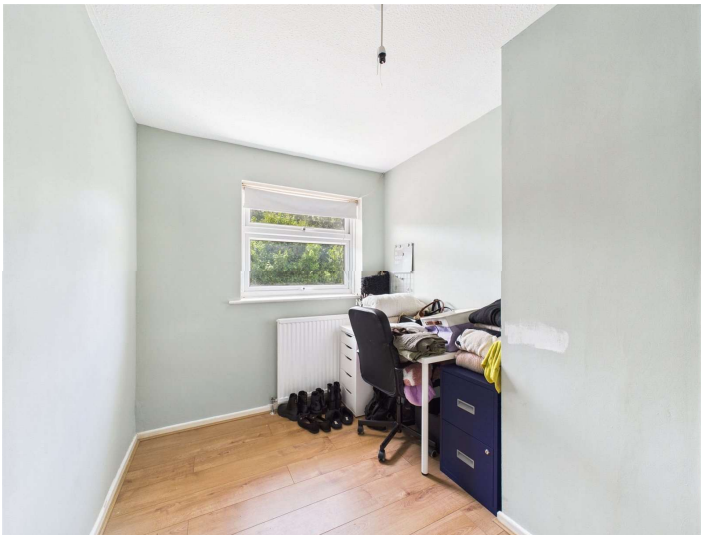
Ground Floor



Floor 1



THE PROPERTY PROFESSIONALS Christchurch | Southbourne | Highcliffe | Bransgore



Slades - Christchurch 7 Castle Street, Christchurch, Dorset, BH23 1DP
01202 474202 | enquiries@sladeschristchurch.co.uk
Website www.sladeshomes.co.uk

