



116A Southbourne Overcliff Drive,
Bournemouth, Dorset, BH6 3NQ

Guide Price **£800,000**



Bedrooms



Living



Bath & Shower room



Parking



EST
1992

THE PROPERTY PROFESSIONALS
Slades Estate Agents

Slades

A clifftop home offering sensational sea and coastal views!

THIS THREE BEDROOM CLIFFTOP APARTMENT OFFERS SENSATIONAL UNINTERRUPTED SEA VIEWS ENJOYABLE FROM ITS PRIVATE REAR GARDEN AND MODERN INTERIOR ACCOMMODATION. DON'T MISS OUT ON THIS EXCEPTIONALLY RARE OPPORTUNITY!

Set on Southbourne's overcliff and boasting a private rear garden backing directly on to the cliff top itself, the views this apartment offers are truly incredible!

Updated by our clients, the apartment is extremely well presented and modern throughout, those incredible views also enjoyable from its open plan living space and two of the apartments three bedrooms.

A private front entrance opens to a fair-sized hallway which continues open plan through to the living space and has doors to a bathroom & separate shower room, providing a convenient layout ideal for family and visiting guests.

Flooded with natural light, the open-plan living space enjoys breathtaking sea views through a bay window with French doors opening out to the garden.

Stylish, highly functional and complete with integrated appliances, the recently updated kitchen offers excellent storage and working space with views through to the living area and the sea beyond.

There are three bedrooms all of which feature built in wardrobes/storage. The master bedroom boasts a Bay window looking over the private rear garden and giving magnificent sea views, whilst bedroom three offers direct garden access via French doors and makes for a flexible room, equally suited as a large study, dining room or similar.

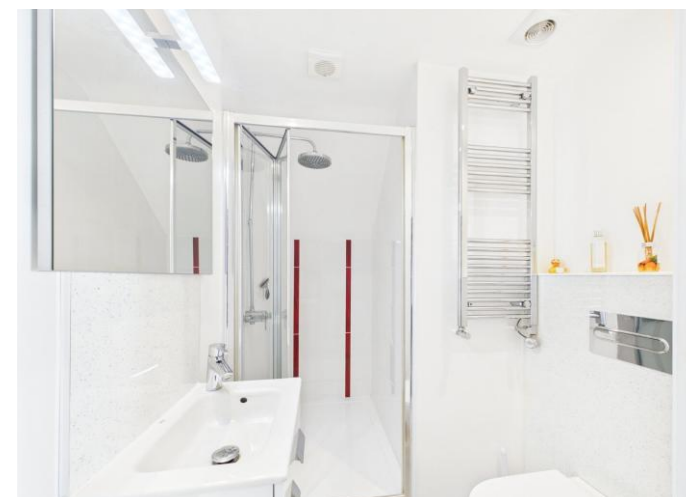
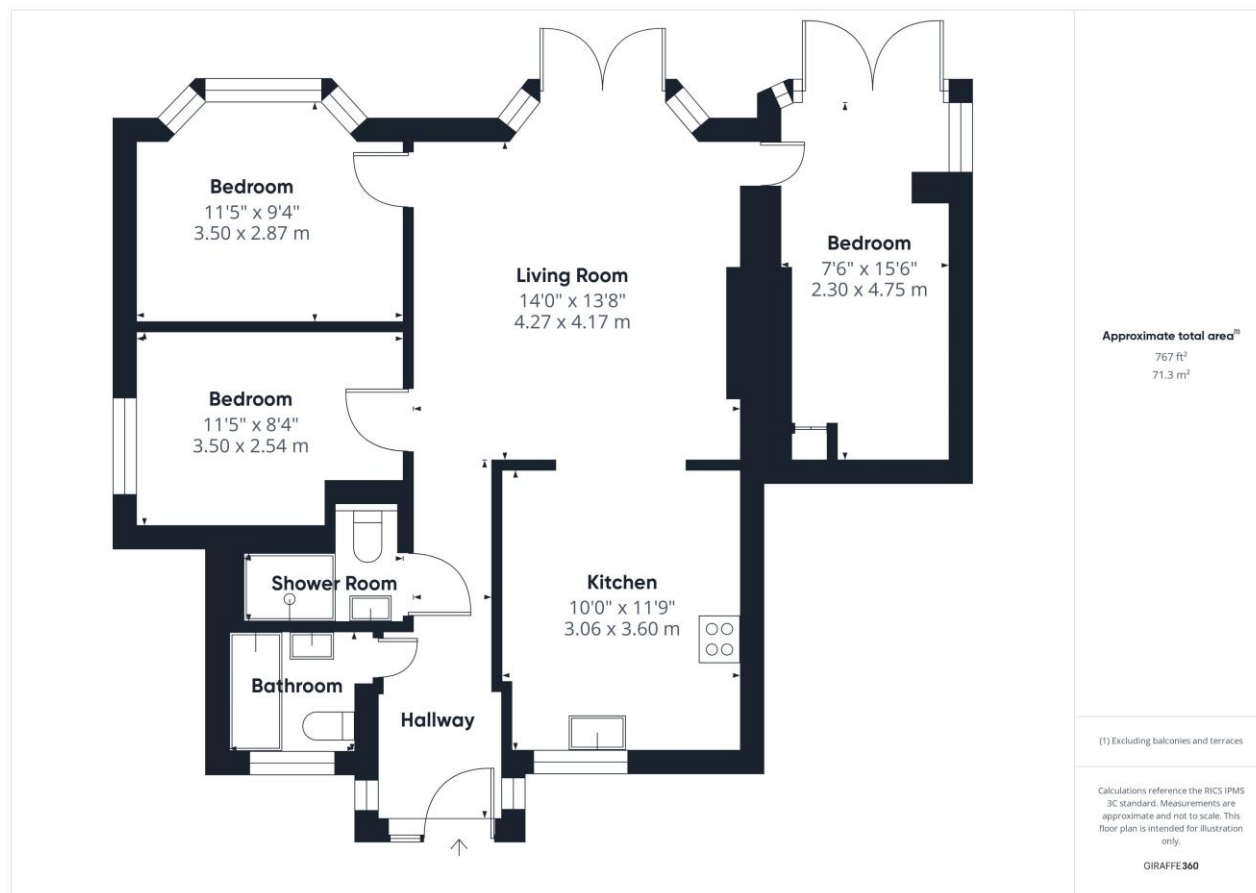
A real standout feature, the low-maintenance South facing rear garden offers spectacular and uninterrupted sea views stretching from The Isle Of Wight in the East to The Isle Of Purbeck in the West, a panorama that will be hard to beat anywhere along the South Coast! The perfect place for al fresco dining, relaxing, or simply enjoying the coastal lifestyle with the sounds of Southbourne's beaches beneath.

Those who know the area will realise what a rare and truly unique opportunity this apartment presents. For those not quite so familiar, book your viewing today and find out why!

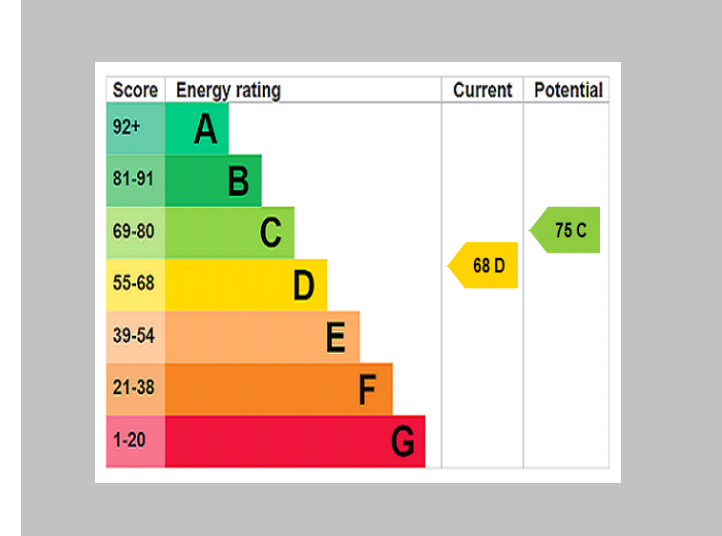
THE TENURE: We understand the property is leasehold, full details and confirmation of both ground rent and maintenance charges are to follow.



KEY POINTS
Exceptionally rare opportunity
Stunning Sea Views
No chain
Private rear garden
Three bedrooms
Modern and well presented



THE PROPERTY PROFESSIONALS Christchurch | Southbourne | Highcliffe | Bransgore



Slades - Southbourne 51 Southbourne Grove, Bournemouth, Dorset, BH6 3QT
01202 428555 | sales@sladessouthbourne.co.uk
Website www.sladeshomes.co.uk

