



Flat 8, Seascape, 11A Southbourne Overcliff Drive,
Southbourne, Bournemouth, Dorset, BH6 3TF

Guide Price

£700,000- £725,000



2

Bedrooms



2

Living



2

Bathroom/Ensuite



Y

Parking/Garage



EST
1992

THE PROPERTY PROFESSIONALS
Slades Estate Agents

Slades

A simply stunning clifftop apartment offering sea views

Whether you are searching for a permanent or holiday home by the sea this really is an apartment not to be missed! Not only does this fabulous apartment offer superb sea and coastal views but it is perfectly positioned at the head of Grand Avenue, meaning the popular Southbourne Grove is just a short walk away.

Offering a shade under 1000 square foot of beautifully presented accommodation to include a wonderful 20' x 17' dual aspect living room, two double bedrooms, a modern kitchen and two bath/shower rooms, the apartment offers magnificent 180-degree sea and coastal views stretching from the Needles to the East to Old Harry Rocks to the West.

The star of the show is undoubtedly the expansive Lounge/diner, offering a dual aspect and the most wonderful sea views which can also be enjoyed from the south facing balcony, which is also accessible from the largest bedroom.

The kitchen offers a range of modern eye level and base units with built in appliances, both bedrooms are good doubles with the larger benefiting from a modern En-Suite shower room and the family bathroom has been fitted with a modern three-piece white suite.

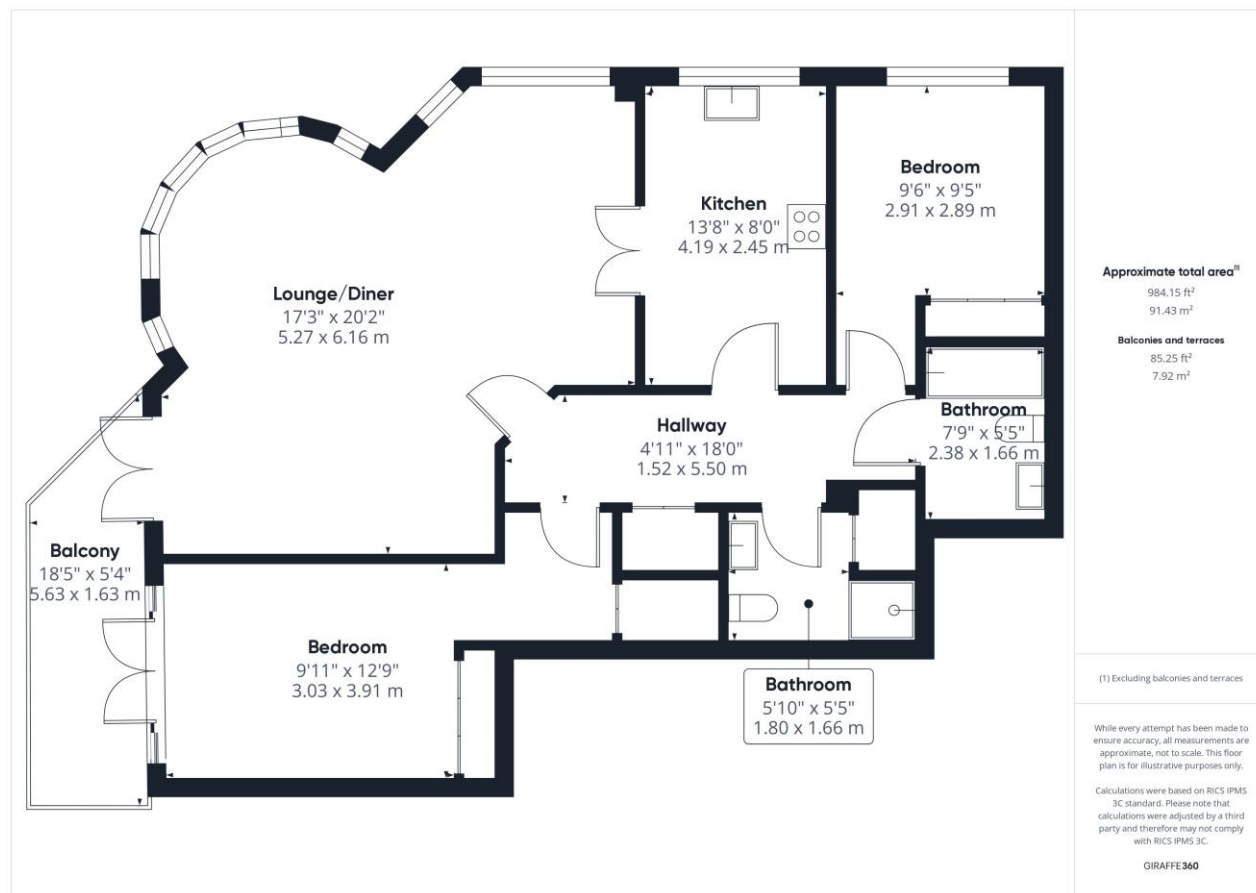
Further benefits include gas fired central heating, UPVC double glazing, a share within the freehold, allocated off road parking and a lift to all floors.

Tenure - Shared freehold - 977 years remaining on lease.
Ground Rent - £0
Service Charge - £
Council Tax - Band F



KEY POINTS

Stunning 2nd floor apartment
Magnificent sea & coastal views
20' x 17' Lounge/Diner
Beautifully presented
24' Balcony
Two double bedrooms
Short walk to Southbourne Grove
Share within the freehold
ORP



The Consumer Protection from Unfair Trading Regulations 2008 (CPRs). These details are for guidance only and complete accuracy cannot be guaranteed. If there is any point, which is of particular importance, verification should be obtained. They do not constitute a contract or part of a contract. All measurements are approximate. No guarantee can be given with regard to planning permissions or fitness for purpose. No apparatus, equipment, fixture or fitting has been tested. Items shown in photographs are NOT necessarily included. Interested Parties are advised to check availability and make an appointment to view before travelling to see a property.

THE PROPERTY PROFESSIONALS

Christchurch | Southbourne | Highcliffe | Bransgore



EPC TO FOLLOW

Slades - Southbourne 51 Southbourne Grove, Bournemouth, Dorset, BH6 3QT
01202 428555 | sales@sladessouthbourne.co.uk
Website www.sladeshomes.co.uk

Slades