

5 Woodhayes Avenue, Highcliffe, Dorset,
BH23 4RW

Asking Price **£499,950**



Bedrooms



Living



Bathroom



Parking/Garage



EST
1992

THE PROPERTY PROFESSIONALS
Slades Estate Agents

Slades

Lovely private setting, in established gardens, on a sought after road...

NO CHAIN. LOVELY PRIVATE SETTING, IN ESTABLISHED GARDENS ON A SOUGHT AFTER ROAD IN HIGHCLIFFE. IN NEED OF REFURBISHMENT, AND WITH SO MUCH POTENTIAL TO RECONFIGURE AND EXTEND.

In the entrance hall there is access to the loft, and two cupboards. Doors lead to the accommodation.

Two double bedrooms, the master with built in wardrobes, and both with a pleasant outlook over the front or rear gardens.

There is a bathroom and an additional shower room, both with obscured windows.

The lounge diner runs front to back, and enjoys an outlook over both the front, and rear gardens.

The kitchen has space for a range of white goods and appliances, and the wall mounted modern gas combi boiler. Door

leads into the garden.

Outside

Long driveway providing plenty of off road parking and leading to the garage. A side gate leads to the rear.

The front garden is completely private with established borders on all sides and is mainly laid to lawn.

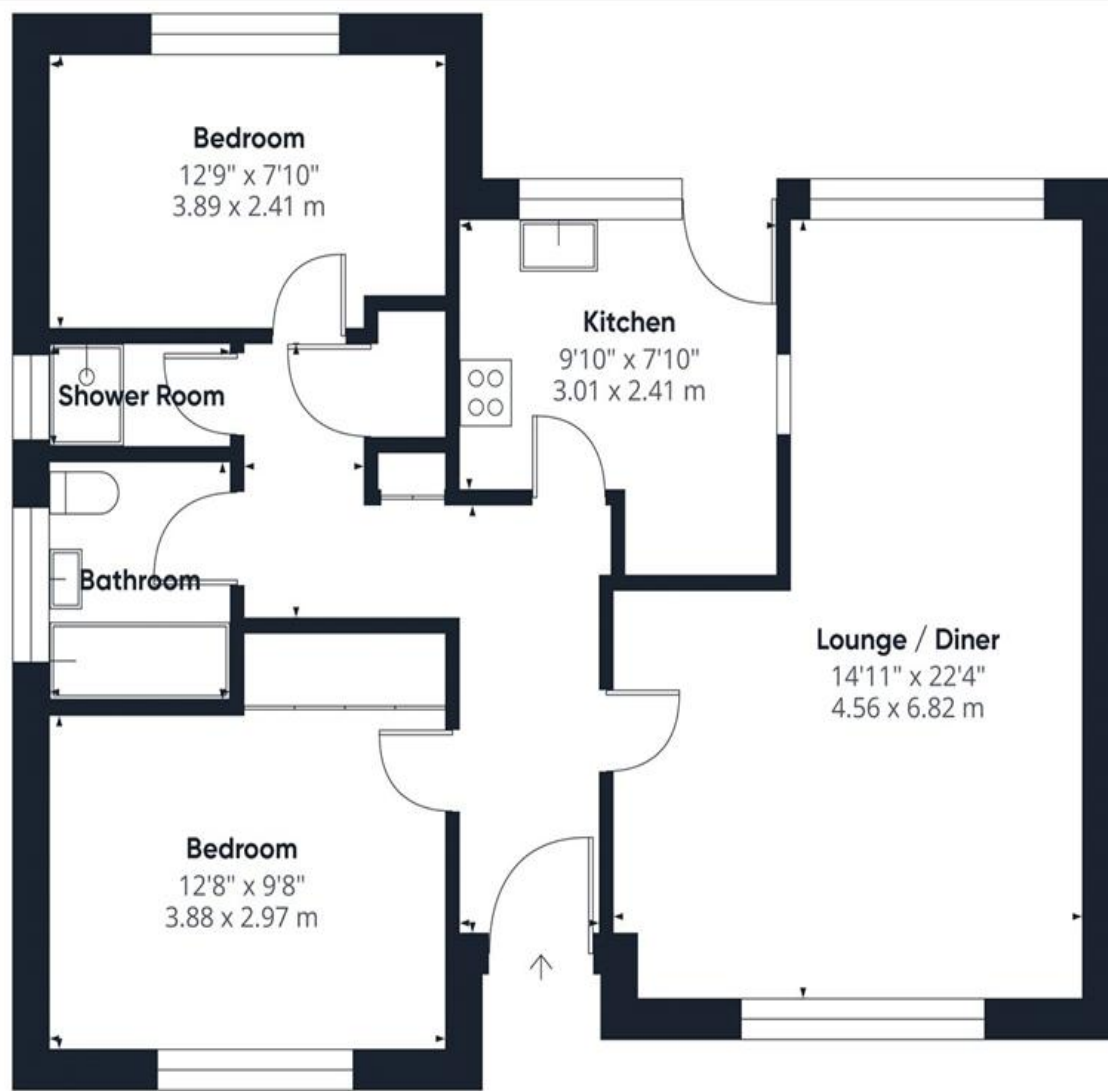
The rear garden is completely private and is laid to lawn with established borders.

Council tax band D.



KEY POINTS

- No chain
- Two double bedrooms
- Sought after location
- Established front and rear gardens
- Great potential to extend and reconfigure
- Garage and driveway
- Two double bedrooms
- Short walk to Hinton Admiral train station



Ground Floor Building 1

Approximate total area⁽¹⁾

770.16 ft²
71.55 m²

(1) Excluding balconies and terraces

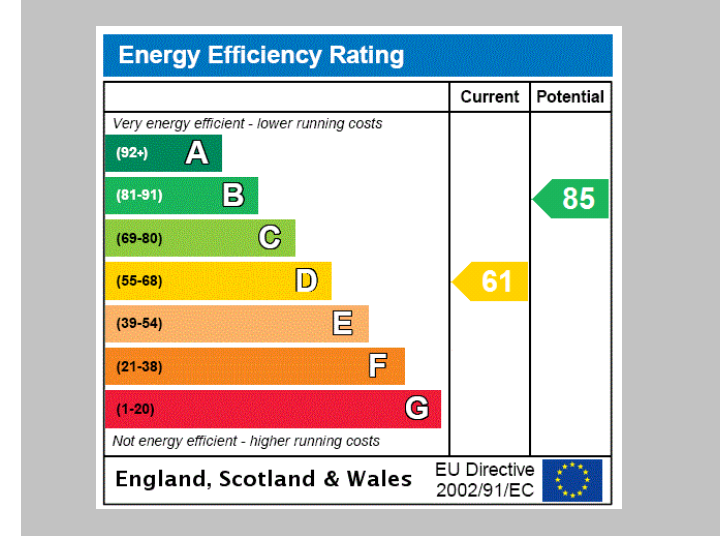
While every attempt has been made to ensure accuracy, all measurements are approximate, not to scale. This floor plan is for illustrative purposes only.

Calculations were based on RICS IPMS 3C standard. Please note that calculations were adjusted by a third party and therefore may not comply with RICS IPMS 3C.

CIRAFFE360



THE PROPERTY PROFESSIONALS Christchurch | Southbourne | Highcliffe | Bransgore



Slades - Highcliffe 356 Lymington Road, Highcliffe, Christchurch, Dorset, BH1
01425 277773 | info@sladeshighcliffe.co.uk
Website www.sladeshomes.co.uk

