

102 Irving Road, Southbourne,
Bournemouth, Dorset, BH6 5BL

Guide Price **£195,000**



2

Bedrooms



1

Living



1

Bathroom/Ensuite



X

Parking/Garage



EST
1992

THE PROPERTY PROFESSIONALS
Slades Estate Agents

Slades

A really cool apartment in the heart of Southbourne!

Set in the heart of Southbourne, moments from local amenities and bus routes on Cranleigh Road is this quirky two double bedroom first floor apartment.

Built at the turn of the last century, the apartment offers large rooms and high ceilings which are fused with modern fixtures and fittings throughout making it very much a turnkey home.

The apartments layout focuses on 'social living' with all rooms accessed of the 22' Kitchen, which has been modernised in recent years.

Both bedrooms are good sized doubles, with the larger benefiting from a large walk-in cupboard which also houses the combination boiler.

The living room offers ample space for a range of living and dining room furniture; there is a feature log burner with brick surround and another walk in storage cupboard.

The fully tiled shower room has been modernised in recent years and benefits from a large walk-in shower with a curved shower screen, low level flush WC and wash hand basin.

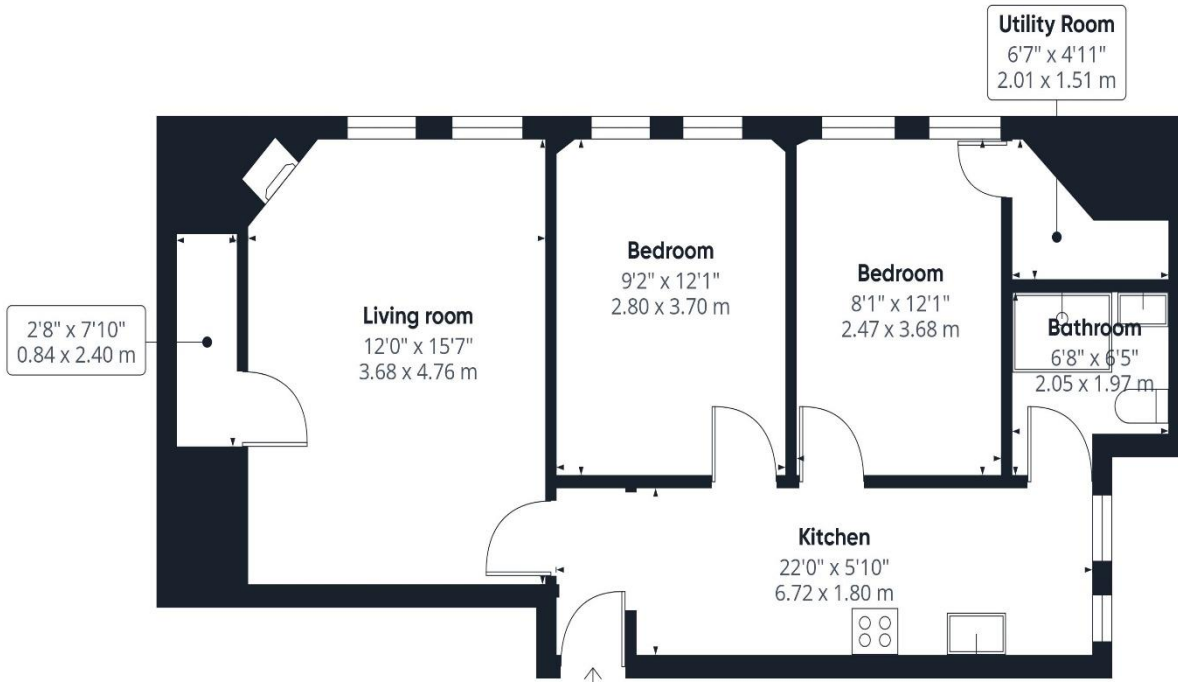
The apartment is held on a leasehold basis with a newly extended lease of....years.

Offered for sale with no onward chain, an internal inspection is an absolute must!



KEY POINTS

- Spacious & well presented
- Two double bedrooms
- Lots of character
- Great location
- Modern kitchen & shower room
- Newly extended lease
- No onward chain

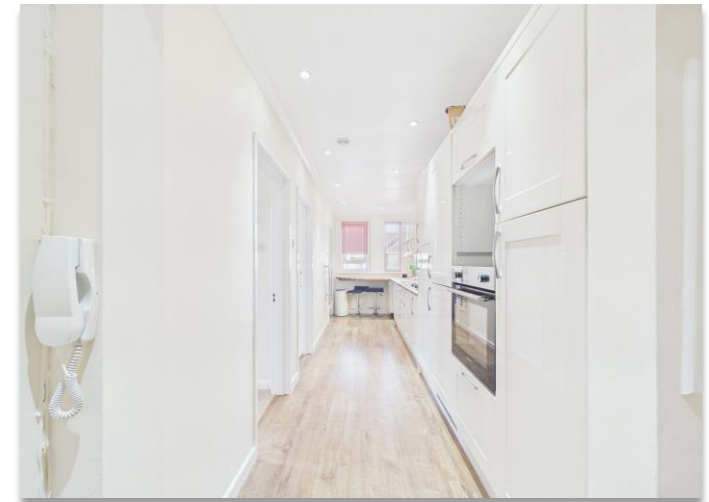
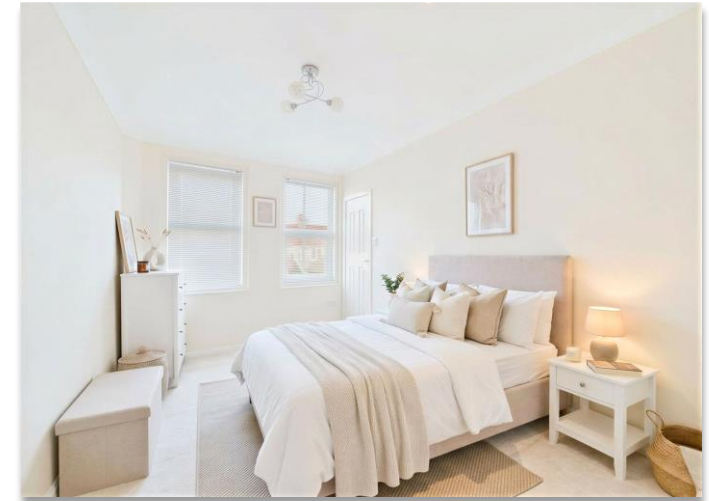


Approximate total area⁽¹⁾
614 ft²
57 m²

(1) Excluding balconies and terraces

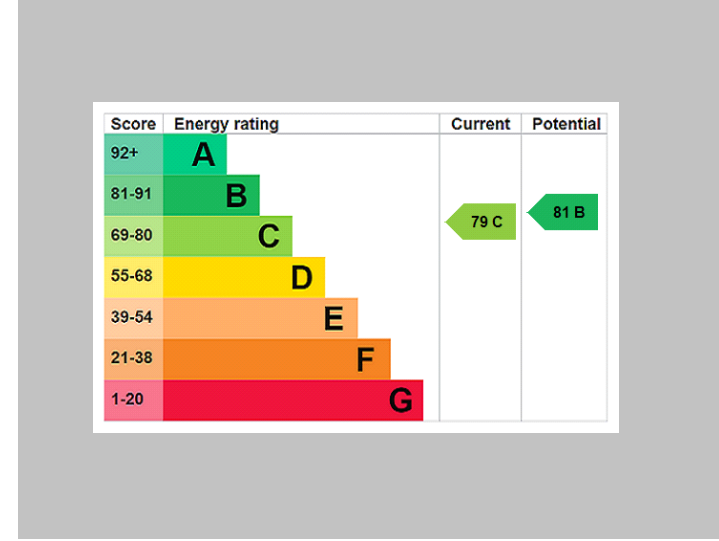
Calculations reference the RICS IPMS 3C standard. Measurements are approximate and not to scale. This floor plan is intended for illustration only.

GIRAFFE360



The Consumer Protection from Unfair Trading Regulations 2008 (CPRs). These details are for guidance only and complete accuracy cannot be guaranteed. If there is any point, which is of particular importance, verification should be obtained. They do not constitute a contract or part of a contract. All measurements are approximate. No guarantee can be given with regard to planning permissions or fitness for purpose. No apparatus, equipment, fixture or fitting has been tested. Items shown in photographs are NOT necessarily included. Interested Parties are advised to check availability and make an appointment to view before travelling to see a property.

THE PROPERTY PROFESSIONALS Christchurch | Southbourne | Highcliffe | Bransgore



Slades - Southbourne 51 Southbourne Grove, Bournemouth, Dorset, BH6 3QT
01202 428555 | sales@sladessouthbourne.co.uk
Website www.sladeshomes.co.uk

