



111 Petersfield Road, Bournemouth,
Dorset, BH7 6QH

Guide Price **£475,000**



3

Bedrooms



2

Living



1

Bathroom/Ensuite



Y

Parking/Garage



EST
1992

THE PROPERTY PROFESSIONALS
Slades Estate Agents

Slades

A super bungalow in a most sought-after location!

Set in a most convenient location, just a short distance to JP Morgan, The Royal Bournemouth hospital, Kings Park and the A35, this well-presented detached bungalow offers three bedrooms along with a 14' Living room, large conservatory and modern Kitchen and shower room.

The bungalow has been well looked after during our client's ownership but also offers a great opportunity to extend and remodel, subject to the necessary permissions being obtained.

There is UPVC double glazing throughout, along with gas fired central heating, whilst externally there is off road parking to the front, a garage and a good-sized southerly facing rear garden.

The lounge is a generous size, being 14' in length and leads into a sizable fully glazed conservatory which in turn offers access into the southerly facing rear garden.

The two largest bedrooms are both good doubles whilst the third bedroom is a good single.

The kitchen offers a range of modern eye level and base units with some built in appliances and a fully glazed door giving access to the side of the bungalow.

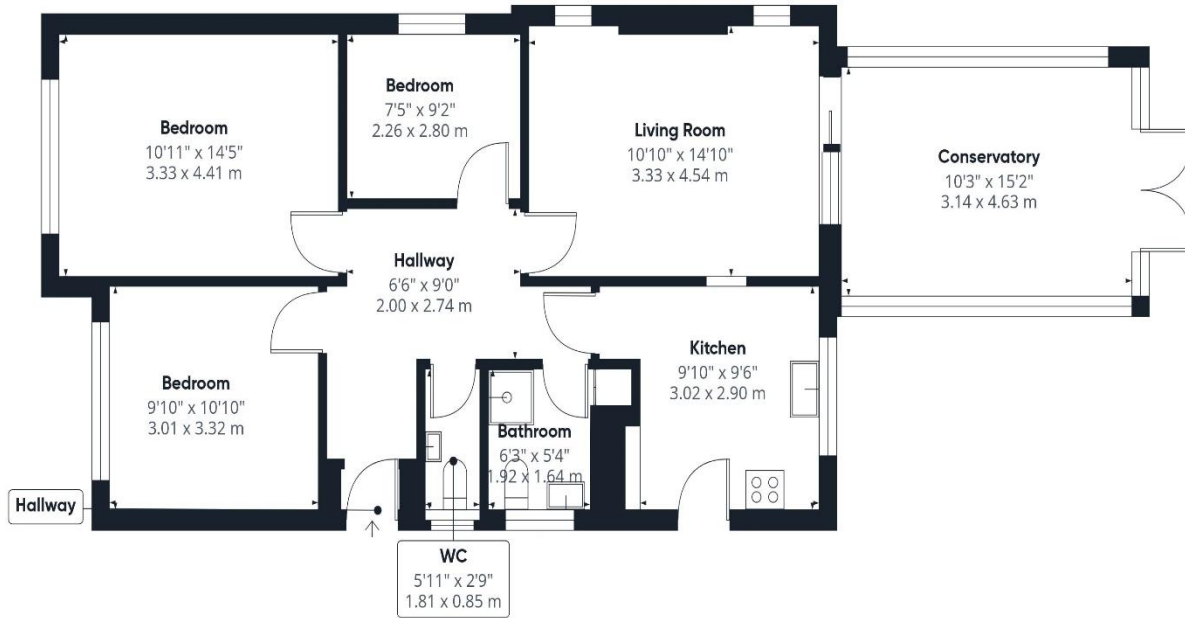
The Shower room is modern and offers a walk-in shower cubicle, low level flush WC and wash hand basin.

With our client suited, an internal inspection comes highly recommended!



KEY POINTS

- Modern and well presented
- Three bedrooms
- 14' Living room
- Large conservatory
- Modern kitchen & shower room
- Southerly facing garden
- Off road parking



Approximate total area⁽¹⁾

913 ft²
84.9 m²

(1) Excluding balconies and terraces

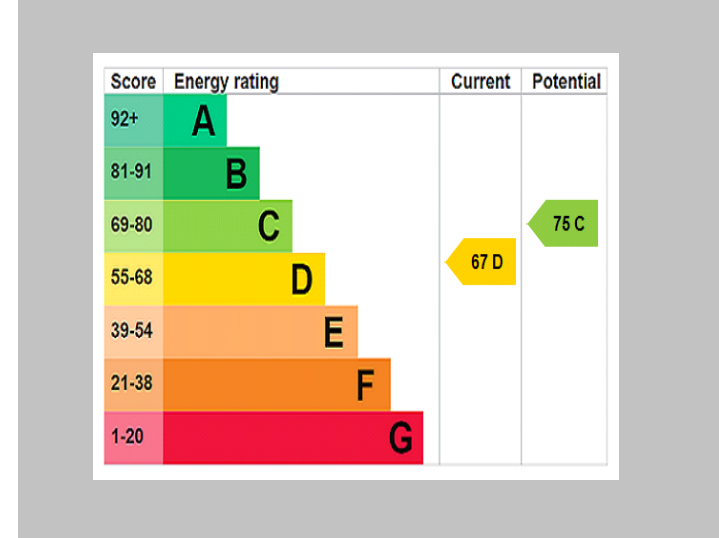
Calculations reference the RICS IPMS 3C standard. Measurements are approximate and not to scale. This floor plan is intended for illustration only.

GIRAFFE360



The Consumer Protection from Unfair Trading Regulations 2008 (CPRs). These details are for guidance only and complete accuracy cannot be guaranteed. If there is any point, which is of particular importance, verification should be obtained. They do not constitute a contract or part of a contract. All measurements are approximate. No guarantee can be given with regard to planning permissions or fitness for purpose. No apparatus, equipment, fixture or fitting has been tested. Items shown in photographs are NOT necessarily included. Interested Parties are advised to check availability and make an appointment to view before travelling to see a property.

THE PROPERTY PROFESSIONALS Christchurch | Southbourne | Highcliffe | Bransgore



Slades - Southbourne 51 Southbourne Grove, Bournemouth, Dorset, BH6 3QT
01202 428555 | sales@sladessouthbourne.co.uk
Website www.sladeshomes.co.uk

