



Flat 24, St. Marys Court, 59 Belle Vue Road,  
Southbourne, Bournemouth, BH6 3DF

Asking Price **£140,000**



2

Bedrooms



1

Living



1

Bathroom/Ensuite



Residents Parking



EST  
1992

THE PROPERTY PROFESSIONALS  
Slades Estate Agents

*Slades*



# POPULAR RETIREMENT DEVELOPMENT!

A TWO DOUBLE BEDROOM FIRST FLOOR APARTMENT IN A POPULAR RETIREMENT DEVELOPMENT LOCATED JUST 0.7 MILES FROM THE EVER-POPULAR SOUTHBOURNE GROVE!

St. Mary's Court offers a full range of resident's benefits which include exceptionally well-maintained communal gardens, a resident's lounge, a laundry room, residents parking and house manager.

The development is just a short distance (0.7 miles) from Southbourne Grove, with its array of independent shops, cafes and transport links into Bournemouth, Poole & Christchurch. Access onto the area's associated 7 miles of sandy beaches stretching from Sandbanks Peninsula in the west to Mudeford Spit in the East is straight forward, via Gordon's zigzag that can be found just 0.6 miles from the development.

Entering the subject apartment, you are immediately met with the hallway, offering doors to all principle rooms, and housing two good sized storage cupboards.

The living room is a good size offering plenty of space for large sofa suites and additional living room furniture. A UPVC double glazed window offers a pleasant outlook over the block's well-kept communal garden.

The kitchen is a good size and is fitted with an eye level electric oven, electric hob with extractor over, plenty of white gloss eye and base level storage units and has space for an upright fridge and freezer.

Bedrooms one and two are both double rooms, and again benefit from pleasant outlooks over the communal gardens.

The apartment is serviced by the well-appointed shower room, fitted with a walk-in shower cubicle, low-level flush w/c, hand wash basin with vanity unit below and a wall mounted heated towel rail.

A fantastic example of a retirement apartment in a popular location, to arrange your viewing Today, contact our seller's chosen sole agents!

COUNCIL TAX BAND: D  
TENURE: LEASEHOLD



## KEY POINTS

Two Bedrooms

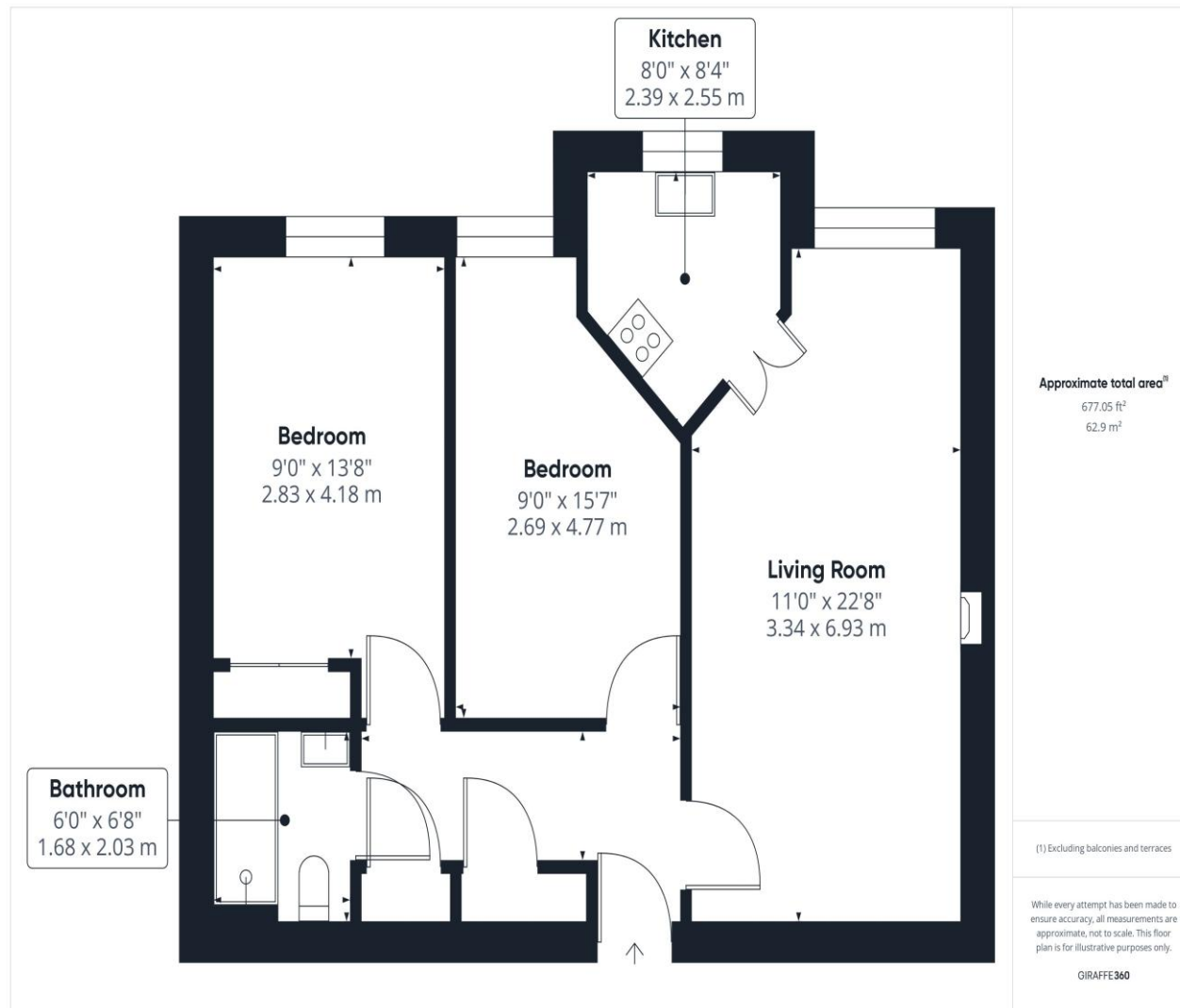
First Floor Apartment

Over 60s Development

Communal Facilities

House Manager

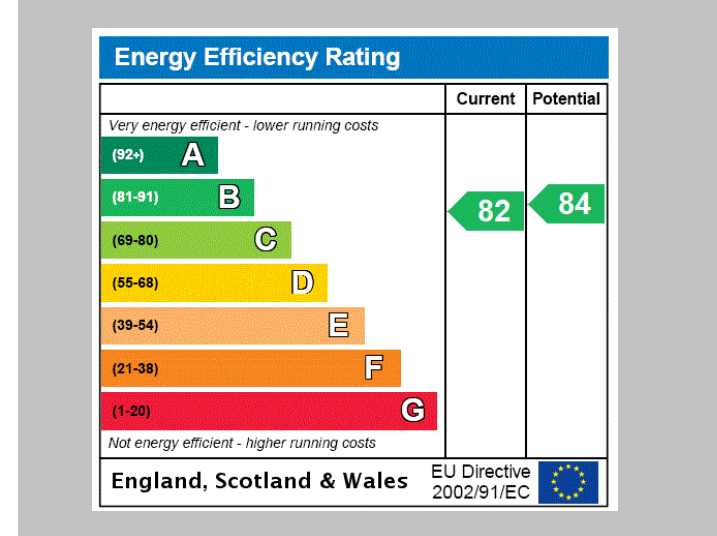
No Forward Chain



**The Consumer Protection from Unfair Trading Regulations 2008 (CPRs).** These details are for guidance only and complete accuracy cannot be guaranteed. If there is any point, which is of particular importance, verification should be obtained. They do not constitute a contract or part of a contract. All measurements are approximate. No guarantee can be given with regard to planning permissions or fitness for purpose. No apparatus, equipment, fixture or fitting has been tested. Items shown in photographs are NOT necessarily included. Interested Parties are advised to check availability and make an appointment to view before travelling to see a property.

# THE PROPERTY PROFESSIONALS

Christchurch | Southbourne | Highcliffe | Bransgore



**Slades - Southbourne** 51 Southbourne Grove, Bournemouth, Dorset, BH6 3QT  
01202 428555 | [sales@sladessouthbourne.co.uk](mailto:sales@sladessouthbourne.co.uk)  
Website [www.sladeshomes.co.uk](http://www.sladeshomes.co.uk)

