

11 Avon Wharf, Bridge Street, Christchurch,
Dorset, BH23 1DJ

Asking Price **£585,000**



Bedrooms



Living



Bathroom/Ensuite



Parking & Garage



EST
1992

THE PROPERTY PROFESSIONALS
Slades Estate Agents

Slades

THREE BEDROOM TOWNHOUSE on WATERSIDE DEVELOPMENT

THIS THREE BEDROOM HOUSE IS SITUATED ON A SOUGHT AFTER RIVERSIDE DEVELOPMENT IN CHRISTCHURCH TOWN CENTRE. THE PROPERTY WILL BE SOLD WITH NO ONWARD CHAIN AND BENEFITS FROM A 7M MOORING, BALCONY AND A REAR GARDEN.

11 Avon Wharf is an opportunity to purchase a well presented town house on a popular waterside development. Avon Wharf is a gated development of just 21 properties that were originally designed by local Architect Cheshire Robbins and provide very flexible accommodation over multiple levels. The development sits next to the River Avon within the historic town centre of Christchurch with its 11th Century Priory, Town Quay and various shops, cafes, bars and restaurants.

This property is well presented and would make an ideal holiday home or permanent residence and a viewing comes highly recommended to appreciate its enviable position and accommodation.

TENURE: LEASEHOLD. The property benefits from the remainder of a 999 years lease.

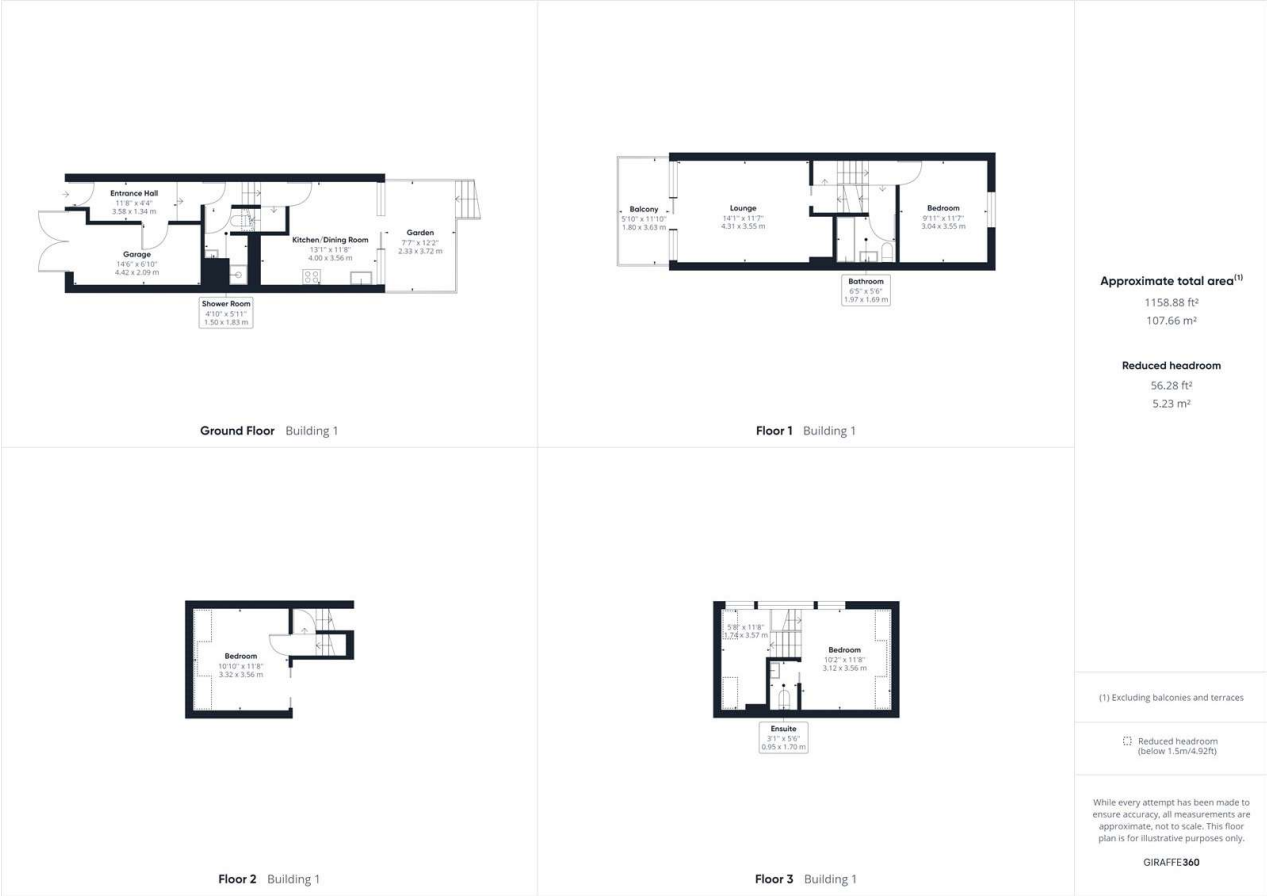
We are informed by our vendor that a Service Charge of £300 is payable every 6 months for the property and a Service Charge of £200 is payable every 6 months for the mooring.

COUNCIL TAX BAND: E



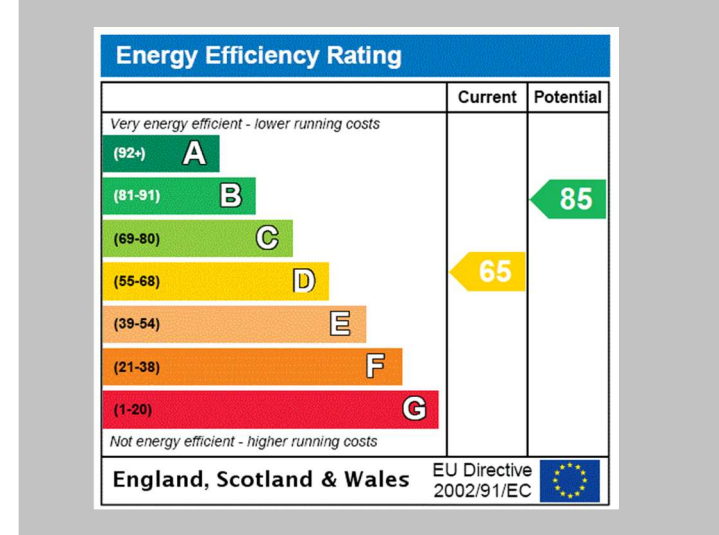
KEY POINTS

- RIVERSIDE DEVELOPMENT
- CHAIN FREE
- 7M MOORING
- BALCONY
- CENTRAL CHRISTCHURCH
- PARKING & GARAGE



The Consumer Protection from Unfair Trading Regulations 2008 (CPRs). These details are for guidance only and complete accuracy cannot be guaranteed. If there is any point, which is of particular importance, verification should be obtained. They do not constitute a contract or part of a contract. All measurements are approximate. No guarantee can be given with regard to planning permissions or fitness for purpose. No apparatus, equipment, fixture or fitting has been tested. Items shown in photographs are NOT necessarily included. Interested Parties are advised to check availability and make an appointment to view before travelling to see a property.

THE PROPERTY PROFESSIONALS Christchurch | Southbourne | Highcliffe | Bransgore



Slades - Christchurch 7 Castle Street, Christchurch, Dorset, BH23 1DP
01202 474202 | enquiries@sladeschristchurch.co.uk
Website www.sladeshomes.co.uk

