



122a Tuckton Road, Tuckton,
Bournemouth, Dorset, BH6 3JY

Asking Price **£189,000**



Bedrooms



Living



Bathroom



On road



EST
1992

THE PROPERTY PROFESSIONALS
Slades Estate Agents

Slades

A two-bedroom apartment offered for sale chain free!

THIS TWO BEDROOM APARTMENT IS CONVENIENTLY POSITIONED ALONG TUCKTON HIGH STREET AND IS OFFERED FOR SALE WITH NO ONWARD CHAIN.

This two-bedroom apartment is set along Tuckton High street and is therefore well positioned to take advantage of its amenities whilst giving easy access to The River Stour at Wick, and Southbourne's popular high street which is approximately 1 mile away.

The apartment has been successfully let in recent years but is now offered with full vacant possession and would make a highly convenient home.

Access to the apartment is gained to the rear of building, a communal front door giving access to a communal hallway with stairs leading to this, and the second floor apartment.

Entering the property, a hallway gives access to all rooms and has a built in cupboard providing storage.

The living room overlooks the front of building and offers room for a good range of furniture.

A separate kitchen has a side aspect window to the rear of building and comes fitted with modern base-level cabinets, complimented by wood effect working surfaces and metro-tiled splash backs.

Bedroom one makes for a good sized double bedroom and has a rear aspect window. Bedroom two overlooks the front of property and makes for a generous single room.

A shower room features a walk in corner cubicle with electric shower, low level wc and hand wash basin.

The apartment benefits from double glazing throughout and a range of modern electric heaters.

Externally, the property does not have an allocated off road parking space, however there is on road parking available close by along Tuckton Road itself and Southlea Avenue adjacent.

THE TENURE: We understand the apartment is leasehold with approximately 117 years remaining. Ground rent and service charges are to be confirmed.



KEY POINTS

No chain

Two bedrooms

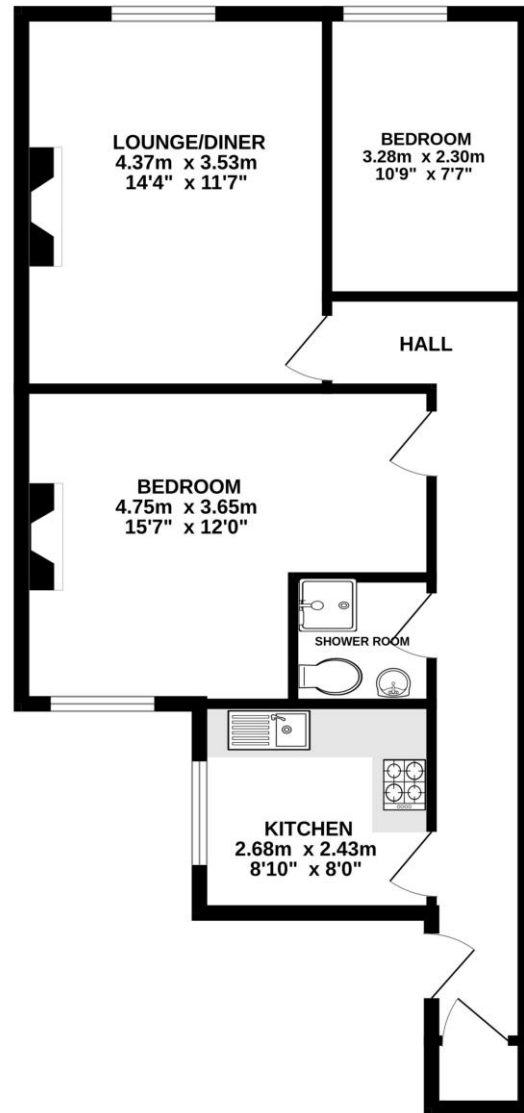
Lounge

Separate Kitchen

Shower room

Convenient location

FIRST FLOOR
57.5 sq.m. (619 sq.ft.) approx.



TOTAL FLOOR AREA : 57.5 sq.m. (619 sq.ft.) approx.

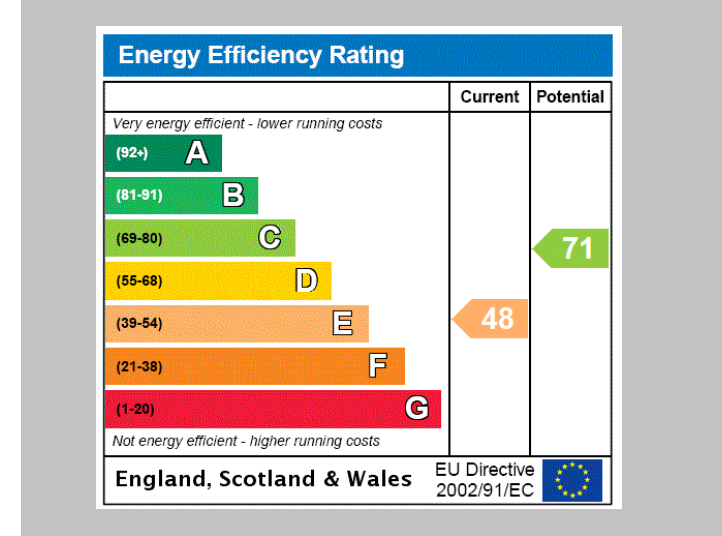
Whilst every attempt has been made to ensure the accuracy of the floorplan contained here, measurements of doors, windows, rooms and any other items are approximate and no responsibility is taken for any error, omission or mis-statement. This plan is for illustrative purposes only and should be used as such by any prospective purchaser. The services, systems and appliances shown have not been tested and no guarantee as to their operability or efficiency can be given.
Made with Metropix ©2023



The Consumer Protection from Unfair Trading Regulations 2008 (CPRs). These details are for guidance only and complete accuracy cannot be guaranteed. If there is any point, which is of particular importance, verification should be obtained. They do not constitute a contract or part of a contract. All measurements are approximate. No guarantee can be given with regard to planning permissions or fitness for purpose. No apparatus, equipment, fixture or fitting has been tested. Items shown in photographs are NOT necessarily included. Interested Parties are advised to check availability and make an appointment to view before travelling to see a property.

THE PROPERTY PROFESSIONALS

Christchurch | Southbourne | Highcliffe | Bransgore



Slades - Southbourne 51 Southbourne Grove, Bournemouth, Dorset, BH6 3QT
01202 428555 | sales@sladessouthbourne.co.uk
Website www.sladeshomes.co.uk

