

Flat 7, Roeshot Mews, Lyndhurst Road,
Christchurch, Dorset, BH23 4WL

Asking Price **£230,000**



Bedrooms



Living



Bathroom



Resident's Parking



EST
1992

THE PROPERTY PROFESSIONALS
Slades Estate Agents

Slades

A Spacious Two Bedroom Flat in Christchurch

THIS TWO BEDROOM FIRST FLOOR FLAT IS SITUATED IN A POPULAR & CONVENIENT PART OF CHRISTCHURCH. THE PROPERTY IS WELL PRESENTED AND BENEFITS FROM A BRAND NEW LEASE.

Flat 7 Roeshot Mews is an opportunity to purchase a generous two double bedroom flat in a modern purpose built block. The property is situated in a desirable spot between Christchurch and Highcliffe as well as sitting within a short distance of Mudeford Quay and Avon Beach. Christchurch Town Centre is approx 2.5 miles away with its 11th Century Priory, Town Quay and various shops, cafes, bars and restaurants.

There is a communal entrance with entryphone. Stairs lead to the first floor where Flat 7 can be found. The front door leads into the entrance hall which features two useful storage cupboards. There is a lounge/diner with a window overlooking the communal gardens to the rear. A door leads into the kitchen which has a range of base and eye level units as well as some integral appliances. There is also a large storage cupboard. There are two double bedrooms. Bedroom one benefits from built in wardrobes. The bathroom features a wc, basin and bath with shower over.

To the front of the block, there is plenty of RESIDENT'S PARKING. There are COMMUNAL GARDENS to the rear of the development with BIKE STORAGE.

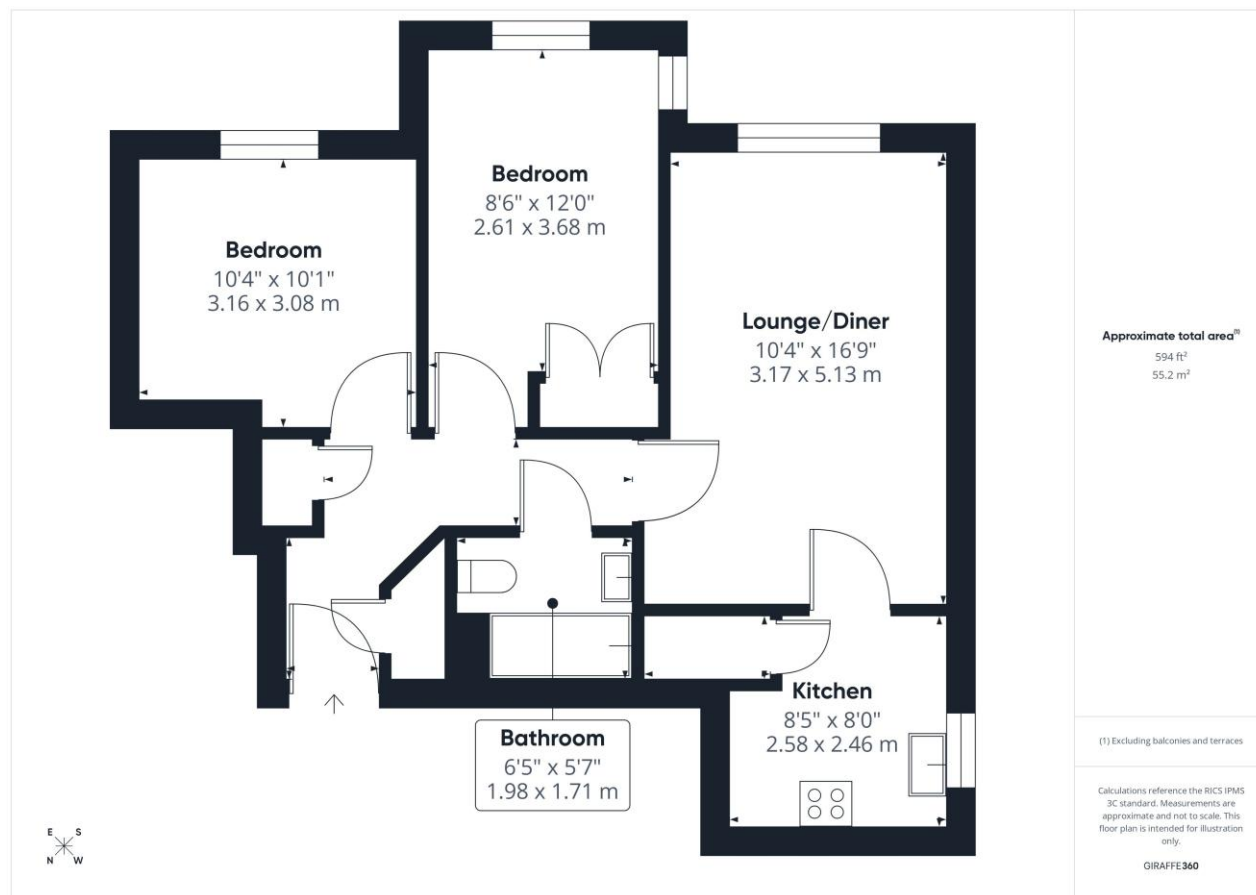
TENURE: LEASEHOLD. We understand that there are 178 years remaining on the lease with a service charge of £82.33pcm.

COUNCIL TAX BAND: B

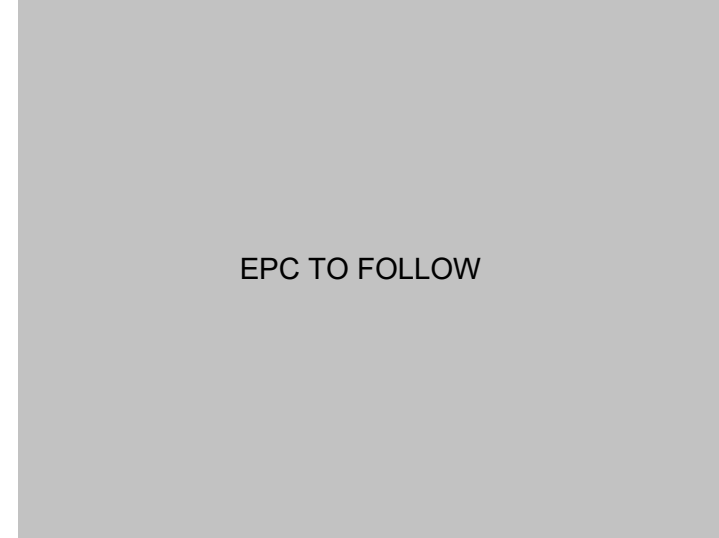


KEY POINTS

- FIRST FLOOR FLAT
- TWO DOUBLE BEDROOMS
- PURPOSE BUILT BLOCK
- EXTENDED LEASE
- AMPLE RESIDENT'S PARKING
- WELL PRESENTED



THE PROPERTY PROFESSIONALS Christchurch | Southbourne | Highcliffe | Bransgore



Slades - Christchurch 7 Castle Street, Christchurch, Dorset, BH23 1DP
01202 474202 | enquiries@sladeschristchurch.co.uk
Website www.sladeshomes.co.uk

