

5 Anson Close, Mundeford, Christchurch,  
Dorset, BH23 3HZ

Asking Price **£315,000**



Bedrooms



Living



Bathroom



Parking/Garage



EST  
1992

THE PROPERTY PROFESSIONALS  
Slades Estate Agents

*Slades*



# A 2 Bedroom Mid Terrace House with Garage

---

THIS TWO BEDROOM HOUSE IS SITUATED IN A POPULAR AREA OF MUDEFORD. THE HOUSE IS BEAUTIFULLY PRESENTED THROUGHOUT AND FEATURES A SOUTH WESTERLY FACING REAR GARDEN AS WELL AS A GARAGE.

5 Anson Close is an opportunity to purchase a two bedroom house in a sought after location. The property is situated within a short distance of the picturesque Mudeford Quay, Stanpit Nature Reserve and the sandy Avon Beach. Christchurch Town Centre with its 11th Century Priory, Town Quay and various shops, cafes, bars and restaurants is approx 1.5 miles away. Mudeford Infant & Junior Schools are also close by.

An entrance porch leads to a spacious lounge diner and a connecting door to the kitchen with a range of fitted cupboards. There is Space for fridge freezer and washing machine as well as a built-in oven with and hob. A door leads to the garden.

From the sitting room stairs lead to the landing with loft hatch. There are two double bedrooms with ample space for additional furniture. A bathroom with fully tiled walls benefits from a bath with shower over, wc and wash hand basin.

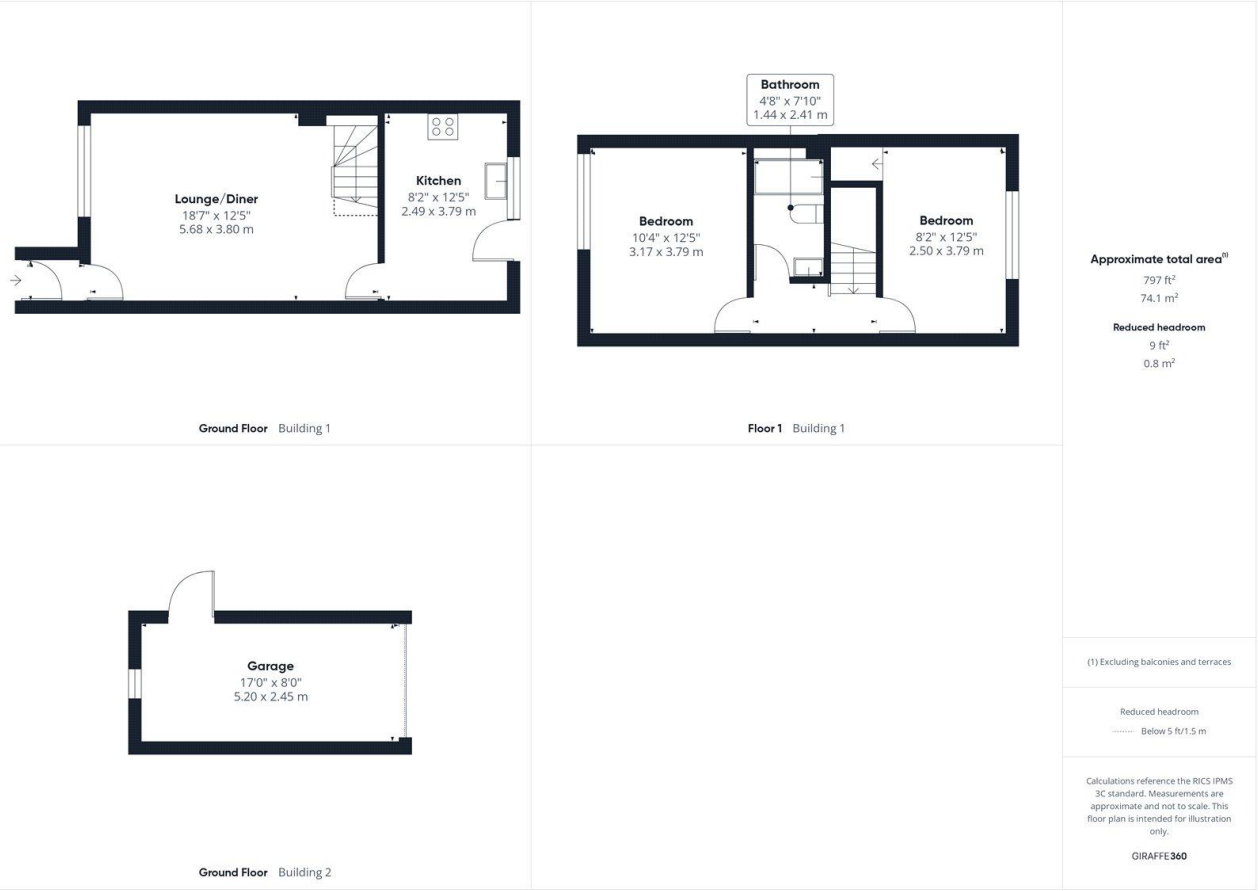
Outside the rear garden has been landscaped with ease of maintenance in mind and enjoys a south westerly aspect. From the rear garden you will find access to the garage, There is also a rear gate providing access to the property as well as an additional parking area.

Tenure: Freehold  
Council tax band C



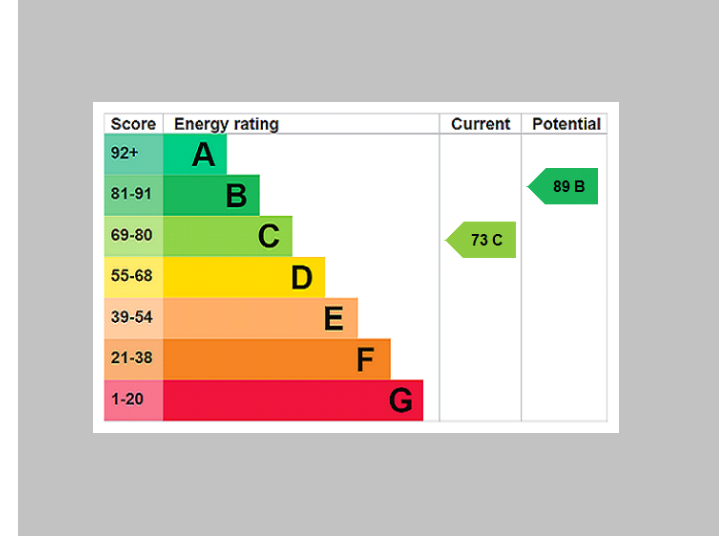
## KEY POINTS

- TWO SPACIOUS BEDROOMS
- BEAUTIFULLY PRESENTED
- SOUGHT AFTER LOCATION
- SOUTH WEST REAR GARDEN
- GARAGE
- CLOSE TO LOCAL SHOPS



# THE PROPERTY PROFESSIONALS

Christchurch | Southbourne | Highcliffe | Bransgore



Slades - Christchurch 7 Castle Street, Christchurch, Dorset, BH23 1DP  
01202 474202 | [enquiries@sladeschristchurch.co.uk](mailto:enquiries@sladeschristchurch.co.uk)  
Website [www.sladeshomes.co.uk](http://www.sladeshomes.co.uk)

