

15 Purewell, Christchurch, Dorset, BH23
1EH

Asking Price **£395,000**



3

Bedrooms



1

Living



1

Bathroom



Parking



EST
1992

THE PROPERTY PROFESSIONALS
Slades Estate Agents

Slades

A Three Bedroom Detached House in Purewell

THIS CHAIN FREE THREE BEDROOM DETACHED HOUSE IS SITUATED IN THE POPULAR AREA OF PUREWELL. THE PROPERTY ENJOYS A SOUTHERLY REAR ASPECT AND BENEFITS FROM OFF ROAD PARKING

15 Purewell is an opportunity to purchase a characterful three bedroom house in a popular and convenient location. Christchurch Town Centre is under half a mile away with its 11th Century Priory, Town Quay and various shops, cafes, bars and restaurants. Purewell also benefits from its own neighbourhood shops as well as regular bus services. The property is also within easy reach of Stanpit Nature Reserve and Mudeford Quay beyond.

The front door leads into the entrance hall. There is a useful ground floor cloakroom with wc and basin. The generous lounge/diner is a key feature of this home with a double aspect and log burner. The kitchen is set to the rear of the property and features a range of base and eye level units. There is an integral cooker and hob as well as spaces for further appliances. Upstairs there are three bedrooms and a bathroom with wc, basin and bath with shower over.

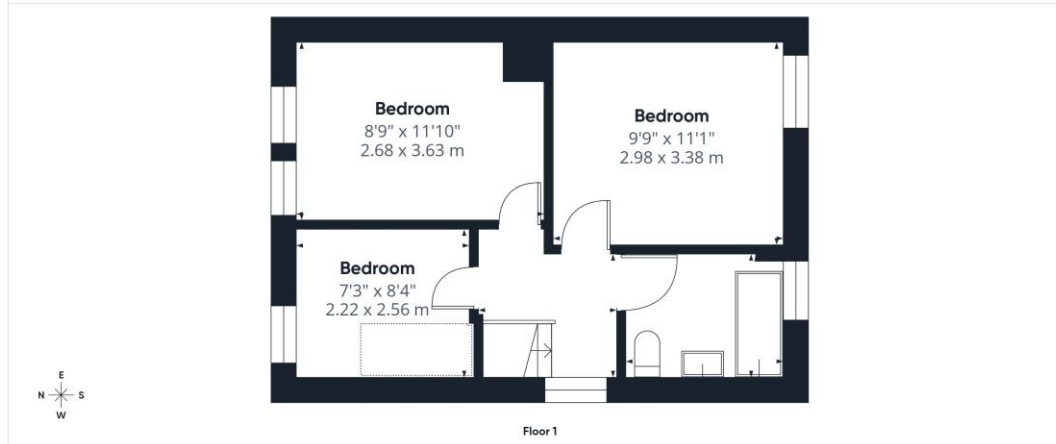
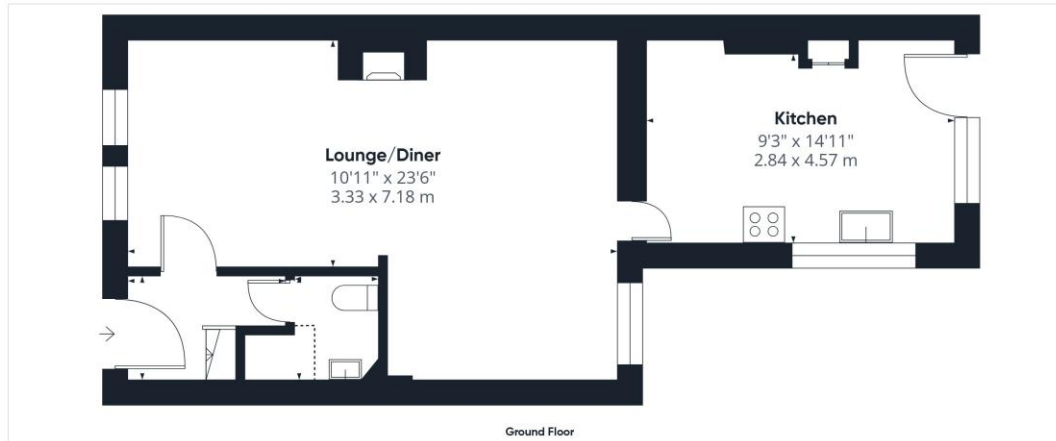
To the front of the property, a driveway provides OFF ROAD PARKING. The rear garden enjoys a southerly aspect and features sections of lawn and patio. Storage Shed.

TENURE: FREEHOLD
COUNCIL TAX BAND: D



KEY POINTS

- DETACHED HOUSE
- NO ONWARD CHAIN
- THREE BEDROOMS
- CENTRAL CHRISTCHURCH
- SOUTH FACING GARDEN
- OFF ROAD PARKING



Approximate total area⁽¹⁾
864 ft²
80.4 m²

Reduced headroom
8 ft²
0.7 m²

(1) Excluding balconies and terraces

Reduced headroom
Below 5 ft/1.5 m

Calculations reference the RICS IPMS 3C standard. Measurements are approximate and not to scale. This floor plan is intended for illustration only.

GIRAFFE 360



The Consumer Protection from Unfair Trading Regulations 2008 (CPRs). These details are for guidance only and complete accuracy cannot be guaranteed. If there is any point, which is of particular importance, verification should be obtained. They do not constitute a contract or part of a contract. All measurements are approximate. No guarantee can be given with regard to planning permissions or fitness for purpose. No apparatus, equipment, fixture or fitting has been tested. Items shown in photographs are NOT necessarily included. Interested Parties are advised to check availability and make an appointment to view before travelling to see a property.

THE PROPERTY PROFESSIONALS Christchurch | Southbourne | Highcliffe | Bransgore



Slades - Christchurch 7 Castle Street, Christchurch, Dorset, BH23 1DP
 01202 474202 | enquiries@sladeschristchurch.co.uk
 Website www.sladeshomes.co.uk

